

MATERIALS LIST

NO.	PART NAME	MATERIAL		Q'TY
1	BODY	ASTM A351 Gr.CF8M	ASTM A216 Gr.WCB	1
4	BALL	ASTM A351 Gr.CF8M	ASTM A351 Gr.CF8	1
5	STEM	SS316	SS304	1
9	END CAP	ASTM A351 Gr.CF8M	ASTM A216 Gr.WCB	1
11	BODY SEAL	GRAPHITE		1
12	SEAT	RTFE.		2
13	THRUST WASHER	GRAPHITE		1
13-1	THRUST WASHER	RTFE.		1
14	STEM PACKING	GRAPHITE		1SET
14-1	STEM PACKING	RTFE.		1
15	GLAND BUSH	SS304		1
19	HANDLE	SS304		1
21	HANDLE COVER	PLASTIC		1
22	STEM NUT	SS304		1
24	HANDLE NUT	SS304		1
28	LOCKING PAD	SS304		1
29	BELLEVILLE WASHER	SS301		2
30	TAB WASHER	SS304		1
33	STOP PIN	SS304		1
35	BODY BOLT	ASTM A193 Gr.B8	ASTM A193 Gr.B7	4
37	BOLT NUT	ASTM A193 Gr.8	ASTM A193 Gr.2HM	4

FLANGE DIMENSION: ASME B16.5
FACE TO FACE: ASME B16.10

DIMENSIONS

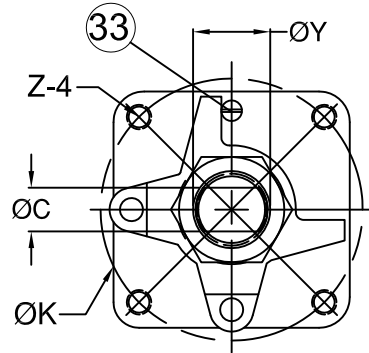
unit:mm

SIZE	PORT	L	E	H	H2	H4	C	ØY	ØG	ØJ	ØI	T	F	M	ØN	ØK	Z	weight	
DN15	1/2"	15.0	108.0	132.0	80.0	8.5	38.5	6.4	9.6	89.0	60.5	35.0	11.2	1.6	4	16.0	42.0	M5*0.8P	2.2KG
DN20	3/4"	20.0	117.0	132.0	84.5	8.5	42.5	6.4	9.6	98.6	70.0	43.0	12.7	1.6	4	16.0	42.0	M5*0.8P	2.85KG
DN25	1"	25.0	127.0	166.0	102.0	12.0	52.0	8.0	11.2	108.0	79.2	51.0	14.3	1.6	4	16.0	50.0	M6*1.0P	3.85KG
DN32	1 1/4"	32.0	140.0	166.0	105.0	12.0	56.0	8.0	11.2	117.5	88.9	63.5	15.9	1.6	4	16.0	50.0	M6*1.0P	5.28KG
DN40	1 1/2"	38.0	165.0	198.0	125.0	12.0	65.3	9.5	16.0	127.0	98.6	73.2	17.5	1.6	4	16.0	70.0	M8*1.25P	7.09KG
DN50	2"	50.0	178.0	198.0	132.0	12.0	73.8	9.5	16.0	152.5	120.7	92.0	19.1	1.6	4	19.0	70.0	M8*1.25P	9.4KG

REV	DATE	DESCRIPTION	CODE	REVISOR	REMARKS	MATERIAL	APPROVE	CHECK	SCALE	UNIT	DATE	Q'TY	TITLE	2-PC Firesafe Flanged Ball Valve
						1/2"~2"			FREE	mm	2010/04/02			
						Class150			AF-50F					
						FIRE-SAFE								

AF
nson

Anson Flow Corp.



MATERIALS LIST

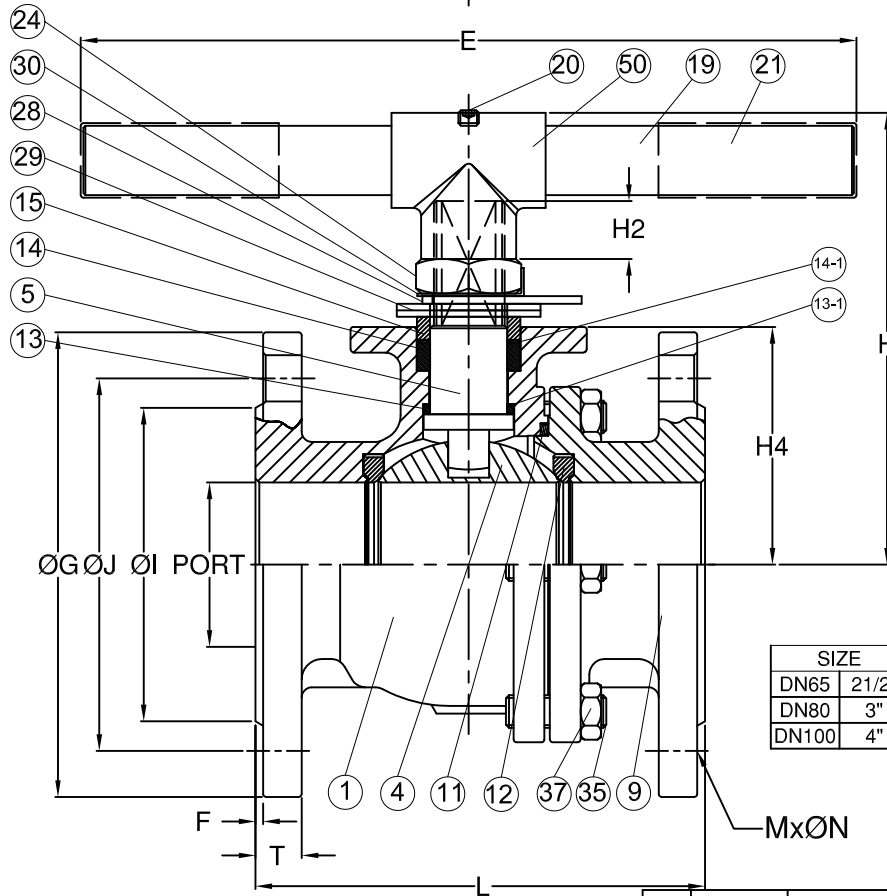
NO.	PART NAME	MATERIAL		Q'TY
1	BODY	ASTM A351 Gr.CF8M	ASTM A216 Gr.WCB	1
4	BALL	ASTM A351 Gr.CF8M	ASTM A351 Gr.CF8	1
5	STEM	SS316	SS304	1
9	END CAP	ASTM A351 Gr.CF8M	ASTM A216 Gr.WCB	1
11	BODY SEAL	GRAPHITE		1
12	SEAT	RTFE.		2
13	THRUST WASHER	GRAPHITE		1
13-1	THRUST WASHER	RTFE.		
14	STEM PACKING	GRAPHITE		1SET
14-1	STEM PACKING	RTFE.		
15	GLAND BUSH	SS304		1
19	HANDLE	LRON		2
20	SET BOLT	SS304		1~2
21	HANDLE COVER	PLASTIC		1
24	HANDLE NUT	SS304		1
28	STOP PLATE	SS304		2
29	BELLEVILLE WASHER	SS301		1
30	TAB WASHER	SS304		1
33	STOP PIN	SS304		6~8
35	BODY BOLT	ASTM A193 Gr.B8	ASTM A193 Gr.B7	6~8
37	BOLT NUT	ASTM A193 Gr.8	ASTM A193 Gr.2HM	1
50	HANDLE ADAPTER	ASTM A351 Gr.CF8		

FLANGE DIMENSION: ASME B16.5
FACE TO FACE: ASME B16.10

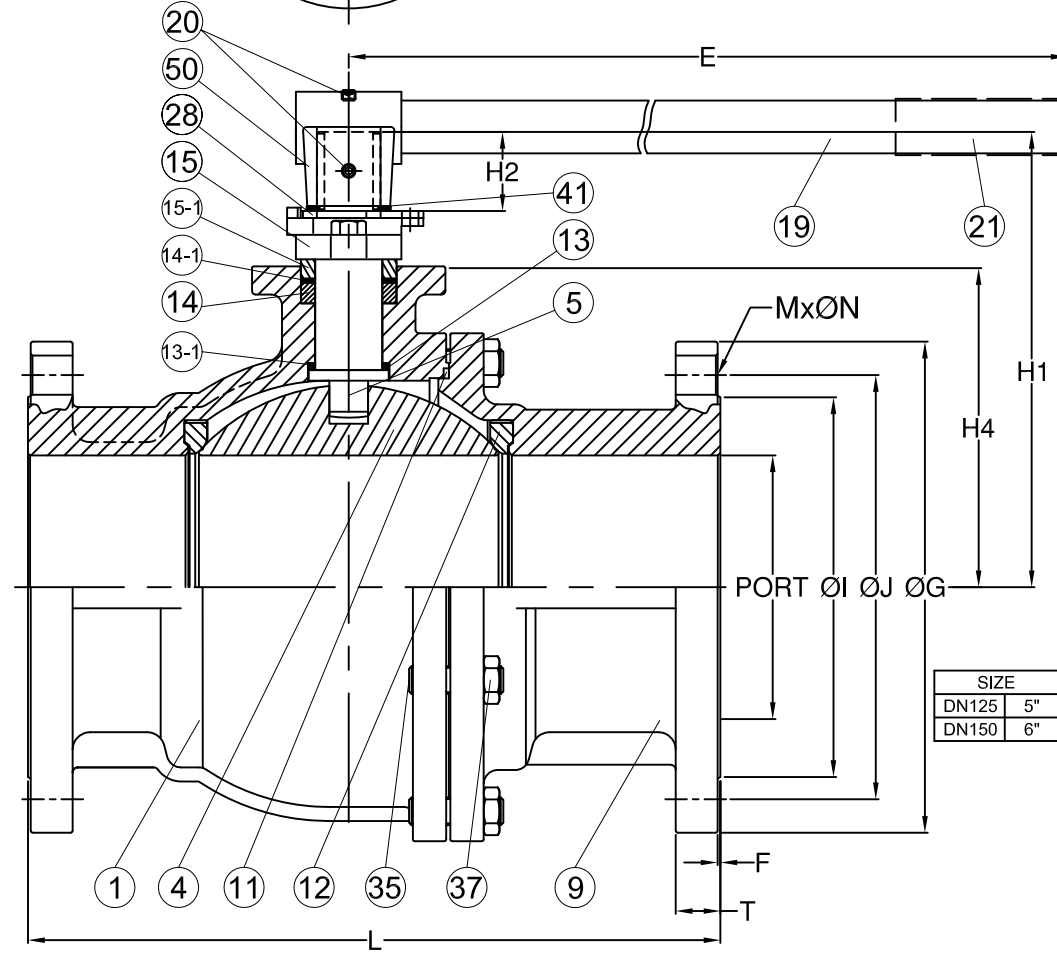
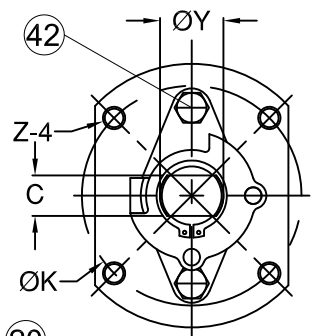
DIMENSIONS

unit:mm

SIZE	PORT	L	E	H	H2	H4	C	ØY	ØG	ØJ	ØI	T	F	M	ØN	ØK	Z	weight	
DN65	2 1/2"	64.0	190.0	300.0	178.0	23.0	92.5	17.0	28.0	177.8	139.7	104.7	23.3	1.6	4	19.0	102.0	M10*1.5P	13.81KG
DN80	3"	76.0	203.0	300.0	188.0	23.0	101.7	17.0	28.0	190.5	152.4	127.0	23.9	1.6	4	19.0	102.0	M10*1.5P	17.36KG
DN100	4"	100.0	229.0	450.0	202.0	23.0	119.0	17.0	28.0	228.6	191.0	157.2	23.9	1.6	8	22.3	102.0	M10*1.5P	23.52KG



REV	DATE	DESCRIPTION	CODE	REVISER	REMARKS	2-1/2"~4"	MATERIAL	APPROVE	CHECK	SCALE	UNIT	mm	DATE	2010/04/02	DRAWN BY	Lawrence
						Class150				PART NO	AF-50F	⊕	Q'TY			
						FIRE-SAFE	OTHER	DWG NO	AF-50F	TITLE	2-PC Firesafe Flanged Ball Valve					
						API 607										



MATERIALS LIST

NO.	PART NAME	MATERIAL		Q'TY
1	BODY	ASTM A351 Gr.CF8M	ASTM A216 Gr.WCB	1
4	BALL	ASTM A351 Gr.CF8M	ASTM A351 Gr.CF8	1
5	STEM	SS316	SS304	1
9	END CAP	ASTM A351 Gr.CF8M	ASTM A216 Gr.WCB	1
11	BODY SEAL	GRAPHITE		1
12	SEAT	RTFE.		2
13	THRUST WASHER	GRAPHITE		1
13-1	THRUST WASHER	RTFE.		1
14	STEM PACKING	GRAPHITE		1SET
14-1	STEM PACKING	RTFE.		1
15	GLAND	ASTM A351 Gr.CF8	ASTM A216 Gr.WCB	1
15-1	GLAND BUSH	SS304		1
19	HANDLE	LRON		1
20	SET BOLT	SS304		2
21	HANDLE COVER	PLASTIC		1
28	STOP PLATE	SS304		1
35	BODY BOLT	ASTM A193 Gr.B8	ASTM A193 Gr.B7	8
37	BOLT NUT	ASTM A194 Gr.8	ASTM A193 Gr.2HM	8
41	SNAP RING	SS304		1
42	GLAND BOLT	SS304		2
50	HANDLE ADAPTER	ASTM A351 Gr.CF8		1

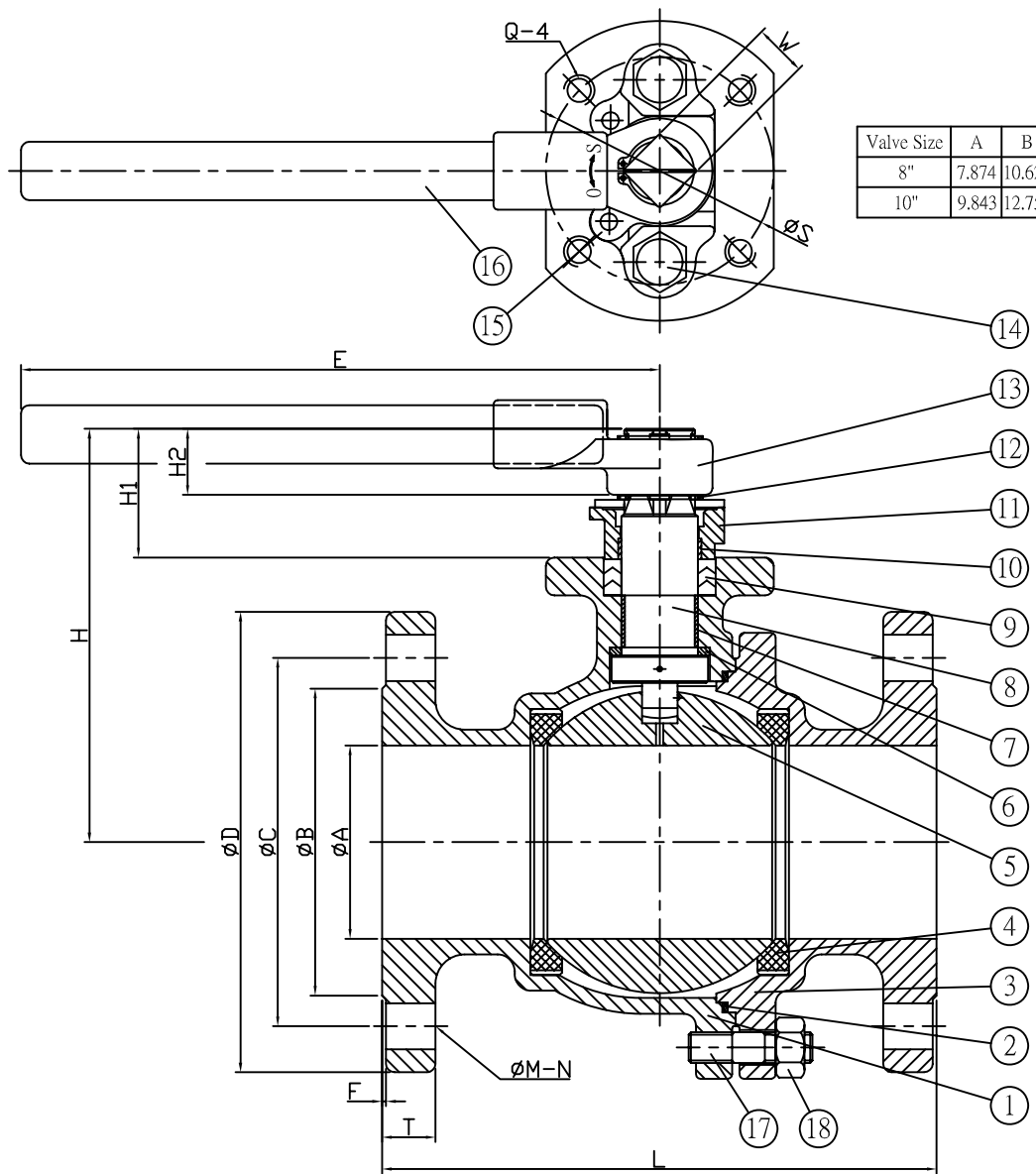
FLANGE DIMENSION: ASME B16.5
FACE TO FACE: ASME B16.10

DIMENSIONS

unit:mm

SIZE	PORT	L	E	H1	H2	H4	C	ØY	ØG	ØJ	ØI	T	F	M	ØN	ØK	Z	weight	
DN125	5"	125.0	325.0	600.0	233.0	45.0	163.0	23.0	36.0	254.0	216.0	186.0	24.0	1.6	8	Ø22.3	125	M12*1.75P	47KG
DN150	6"	150.0	394.0	800.0	259.0	45.0	182.5	23.0	36.0	279.4	241.3	216.0	25.4	1.6	8	Ø22.3	125	M12*1.75P	67KG

REV	DATE	DESCRIPTION	CODE	REVISER	REMARKS	5"~6" Class150 FIRE-SAFE API 607	MATERIAL	APPROVE	CHECK	SCALE	UNIT	mm	DRAWN BY	Lawrence
										FREE			DATE	2010/04/02
							OTHER	DWG NO	AF-50F	AF-50F		Q'TY		
										TITLE			2-PC Firesafe Flanged Ball Valve	



DIMENSIONS

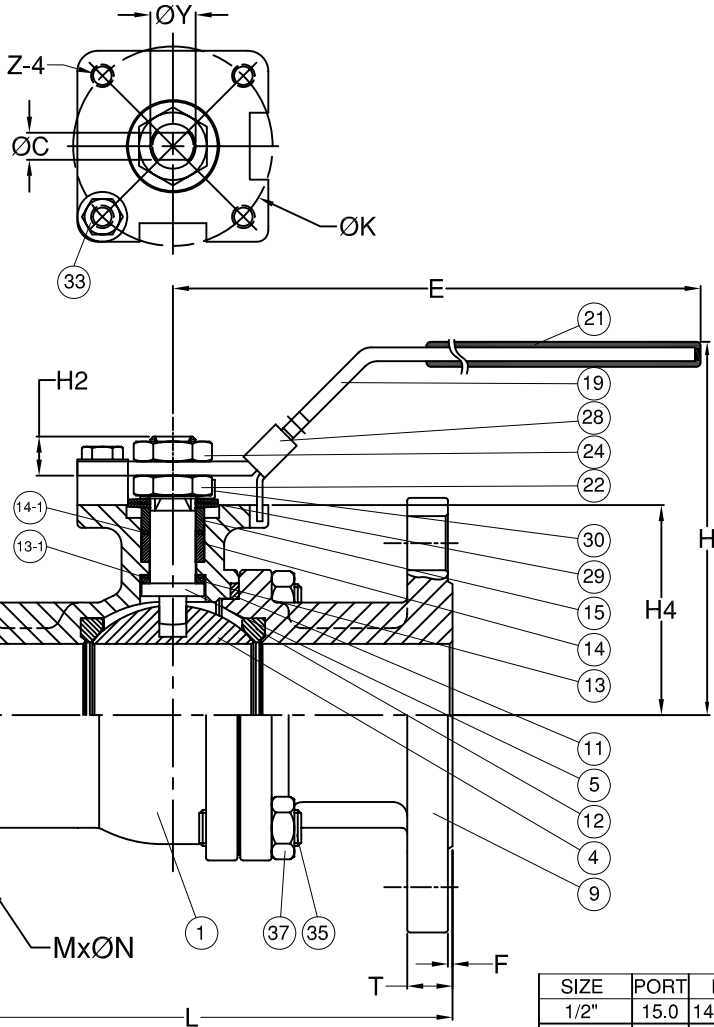
Unit : Inch

Valve Size	A	B	C	D	E	F	H	H1	H2	L	W	S	T	Q	ØM-N
8"	7.874	10.620	11.750	13.500	32.126	0.060	12.815	2.913	1.713	17.992	1.417	5.512	1.120	5/8"-11	Ø0.880-8
10"	9.843	12.750	14.250	16.000	40.000	0.060	15.394	4.567	2.736	20.984	1.811	6.496	1.190	3/4"-10	Ø1.000-12

MATERIALS

NO.	PART NAME	MATERIAL
1	BODY	ASTM A351 Gr. CF8M
2	BODY SEAL	SS 316+GRAPHITE
3	END CAP	ASTM A351 Gr. CF8M
4	SEAT	RTFE.(+15% G/F)
5	BALL	ASTM A351 Gr. CF8M
6	THRUST WASHER	PTFE.+GRAPHITE
7	STEM BUSHING	PTFE.
8	STEM	SS 316
9	STEM PACKING	GRAPHITE
10	GLAND BEARING	PTFE.
11	GLAND	SS 304
12	SNAP RING	SS 304
13	HANDLE ADAPTER	SS 304
14	BOLT	SS 304
15	STOP PLATE	SS 304
16	HANDLE	CARBON STEEL
17	STUD	ASTM A193 Gr. B8
18	NUT	ASTM A194 Gr. 8

REV	DATE	DESCRIPTION	CODE	REVISER	REMARKS	MATERIAL	APPROVE	CHECK	SCALE	UNIT	mm	DRAWN BY	Peggy
						8"~10"			FREE				
						ANSI 150			PART NO	AF-50F	⊕		
						FIRESAFE			OTHER	DWG NO	AF-50F	TITLE	2-PC FLANGED END BALL VALVE
						API 607							



MATERIALS LIST

NO.	PART NAME	MATERIAL		Q'TY
1	BODY	ASTM A351 Gr.CF8M	ASTM A216 Gr.WCB	1
4	BALL	ASTM A351 Gr.CF8M	ASTM A351 Gr.CF8	1
5	STEM	SS316	SS304	1
9	END CAP	ASTM A351 Gr.CF8M	ASTM A216 Gr.WCB	1
11	BODY SEAL	GRAPHITE		1
12	SEAT	RTFE.		2
13	THRUST WASHER	GRAPHITE		1
13-1	THRUST WASHER	RTFE.		1
14	STEM PACKING	GRAPHITE		1SET
14-1	STEM PACKING	RTFE.		1
15	GLAND BUSH	SS304		1
19	HANDLE	SS304		1
21	HANDLE COVER	PLASTIC		1
22	STEM NUT	SS304		1
24	HANDLE NUT	SS304		1
28	LOCKING PAD	SS304		1
29	BELLEVILLE WASHER	SS301		2
30	TAB WASHER	SS304		1
33	STOP PIN	SS304		1
35	BODY BOLT	ASTM A193 Gr.B8	ASTM A193 Gr.B7	4
37	BOLT NUT	ASTM A193 Gr.8	ASTM A193 Gr.2HM	4

FLANGE DIMENSION: ASME B16.5
FACE TO FACE: ASME B16.10

DIMENSIONS

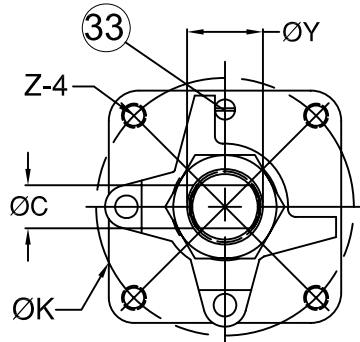
unit:mm

SIZE	PORT	L	E	H	H2	H4	C	ØY	ØG	ØJ	ØI	T	F	M	ØN	ØK	Z	weight
1/2"	15.0	140.0	132.0	80.0	8.5	38.5	6.4	9.6	95.3	66.5	35.0	14.3	1.6	4	16.0	42.0	M5*0.8P	2.01KG
3/4"	20.0	152.0	132.0	84.5	8.5	42.5	6.4	9.6	117.4	82.6	43.0	15.9	1.6	4	19.1	42.0	M5*0.8P	3.06KG
1"	25.0	165.0	166.0	102.0	12.0	52.0	8.0	11.2	124.0	88.9	51.0	17.5	1.6	4	19.1	50.0	M6*1.0P	4.2KG
1 1/4"	32.0	178.0	166.0	105.0	12.0	56.0	8.0	11.2	133.4	98.6	63.5	19.1	1.6	4	19.1	50.0	M6*1.0P	5.16KG
1 1/2"	38.0	190.0	198.0	125.0	12.0	65.3	9.5	16.0	155.5	114.3	73.2	20.7	1.6	4	22.3	70.0	M8*1.25P	8.04KG
2"	50.0	216.0	198.0	132.0	12.0	73.8	9.5	16.0	165.1	127.0	92.0	22.3	1.6	8	19.1	70.0	M8*1.25P	10.16KG

																			A
								1/2"~2"	MATERIAL	APPROVE	CHECK								DRAWN BY Lawrence
								Class300		SCALE	UNIT								DATE 2010/04/02
								FIRE-SAFE	OTHER	PART NO									Q'TY
										DWG NO									TITLE
																			2-PC Firesafe Flanged Ball Valve
REV	DATE																		

AF
Anson

Anson Flow Corp.



MATERIALS LIST

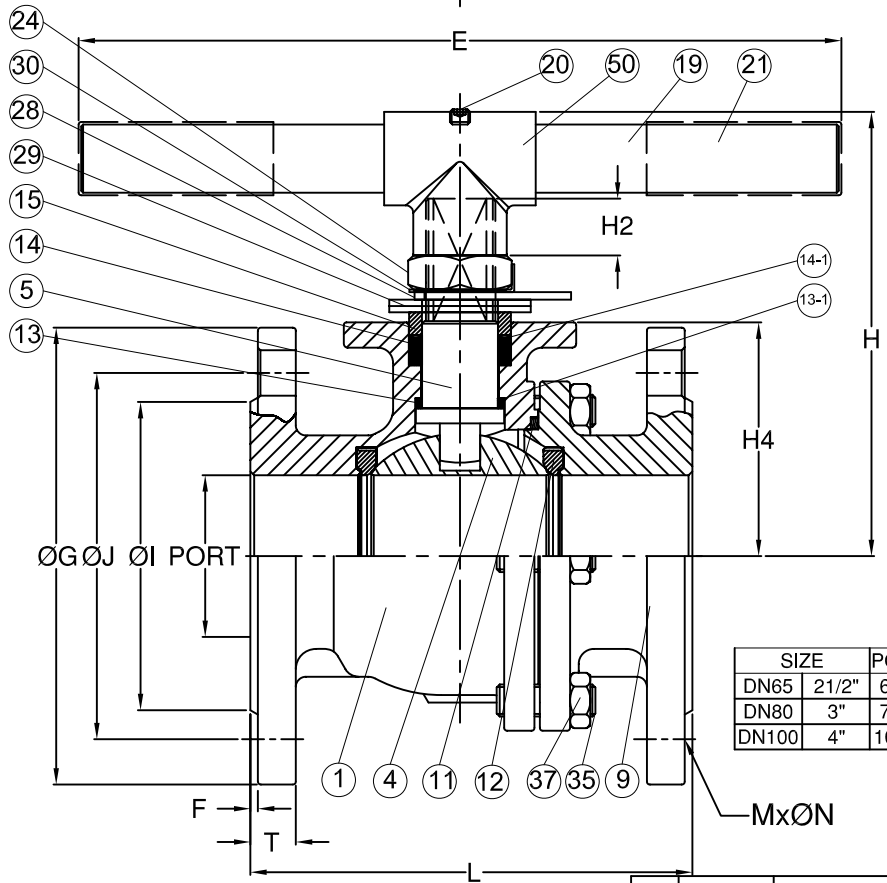
NO.	PART NAME	MATERIAL		Q'TY
1	BODY	ASTM A351 Gr.CF8M	ASTM A216 Gr.WCB	1
4	BALL	ASTM A351 Gr.CF8M	ASTM A351 Gr.CF8	1
5	STEM	SS316	SS304	1
9	END CAP	ASTM A351 Gr.CF8M	ASTM A216 Gr.WCB	1
11	BODY SEAL	GRAPHITE		1
12	SEAT	RTFE.		2
13	THRUST WASHER	GRAPHITE		1
13-1	THRUST WASHER	RTFE.		
14	STEM PACKING	GRAPHITE		1SET
14-1	STEM PACKING	RTFE.		
15	GLAND BUSH	SS304		1
19	HANDLE	LRON		2
20	SET BOLT	SS304		1~2
21	HANDLE COVER	PLASTIC		1
24	HANDLE NUT	SS304		1
28	STOP PLATE	SS304		2
29	BELLEVILLE WASHER	SS301		1
30	TAB WASHER	SS304		1
33	STOP PIN	SS304		6~8
35	BODY BOLT	ASTM A193 Gr.B8	ASTM A193 Gr.B7	6~8
37	BOLT NUT	ASTM A193 Gr.8	ASTM A193 Gr.2HM	1
50	HANDLE ADAPTER	ASTM A351 Gr.CF8		

FLANGE DIMENSION: ASME B16.5
FACE TO FACE: ASME B16.10

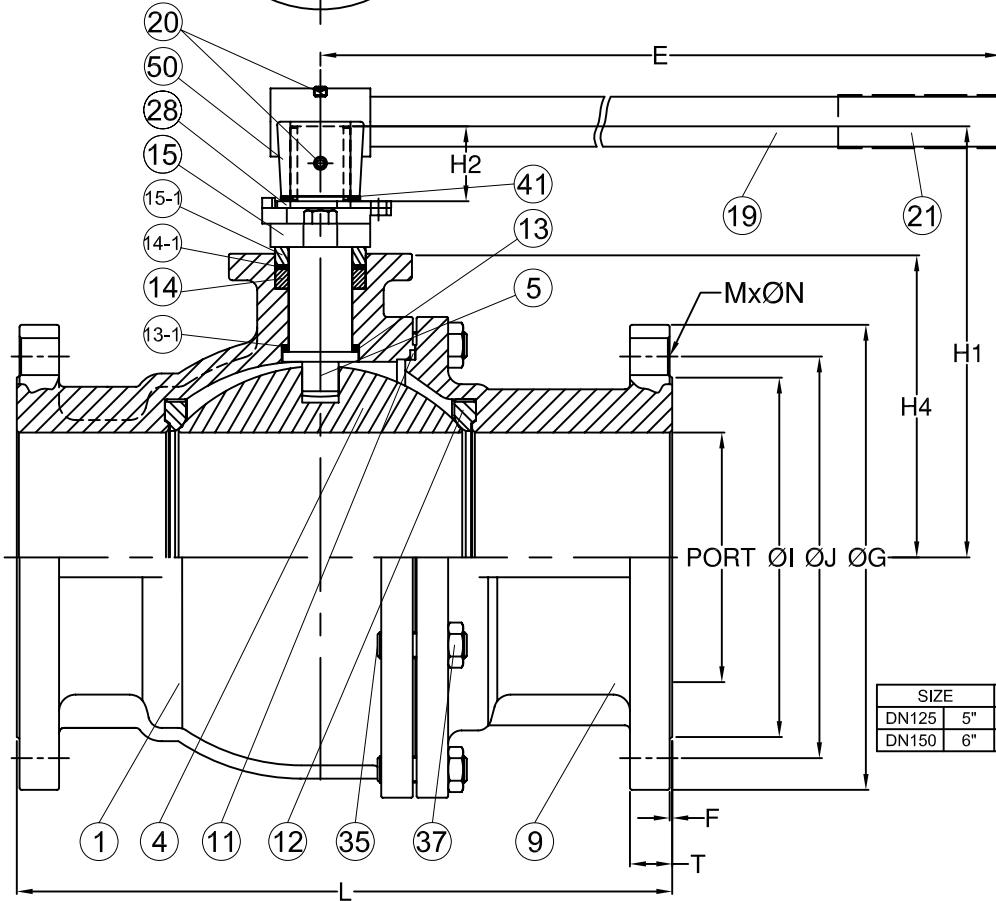
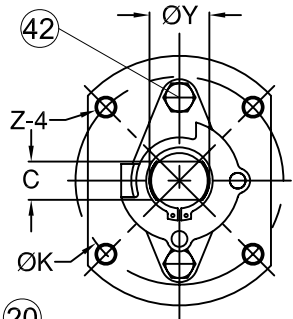
DIMENSIONS

unit:mm

SIZE	PORT	L	E	H	H2	H4	C	ØY	ØG	ØJ	ØI	T	F	M	ØN	ØK	Z	weight	
DN65	2 1/2"	64.0	241.0	300.0	178.0	23.0	92.5	17.0	28.0	190.5	149.4	104.7	25.4	1.6	8	22.3	102.0	M10*1.5P	16.8KG
DN80	3"	76.0	283.0	300.0	188.0	23.0	101.7	17.0	28.0	209.6	168.1	127.0	28.6	1.6	8	22.3	102.0	M10*1.5P	22.8KG
DN100	4"	100.0	305.0	450.0	202.0	23.0	119.0	17.0	28.0	254.0	200.2	157.2	31.8	1.6	8	22.3	102.0	M10*1.5P	36.29KG



REV	DATE	DESCRIPTION	CODE	REVISER	REMARKS	2-1/2"~4"	MATERIAL	APPROVE	CHECK	DRAWN BY	A
						Class300		SCALE	FREE	UNIT	Lawrence
						FIRE-SAFE		PART NO	AF-50F	mm	DATE
							OTHER	DWG NO	AF-50F	Q'TY	2010/04/02
										Ø ⊞	TITLE
											2-PC Firesafe Flanged Ball Valve
							AF^{low}_{inson} Anson Flow Corp.				



MATERIALS LIST

NO.	PART NAME	MATERIAL		Q'TY
1	BODY	ASTM A351 Gr.CF8M	ASTM A216 Gr.WCB	1
4	BALL	ASTM A351 Gr.CF8M	ASTM A351 Gr.CF8	1
5	STEM	SS316	SS304	1
9	END CAP	ASTM A351 Gr.CF8M	ASTM A216 Gr.WCB	1
11	BODY SEAL	GRAPHITE		1
12	SEAT	RTFE.		2
13	THRUST WASHER	GRAPHITE		1
13-1	THRUST WASHER	RTFE.		1
14	STEM PACKING	GRAPHITE		1SET
14-1	STEM PACKING	RTFE.		1
15	GLAND	ASTM A351 Gr.CF8	ASTM A216 Gr.WCB	1
15-1	GLAND BUSH	SS304		1
19	HANDLE	LRON		1
20	SET BOLT	SS304		2
21	HANDLE COVER	PLASTIC		1
28	STOP PLATE	SS304		1
35	BODY BOLT	ASTM A193 Gr.B8	ASTM A193 Gr.B7	8
37	BOLT NUT	ASTM A194 Gr.8	ASTM A193 Gr.2HM	8
41	SNAP RING	SS304		1
42	GLAND BOLT	SS304		2
50	HANDLE ADAPTER	ASTM A351 Gr.CF8		1

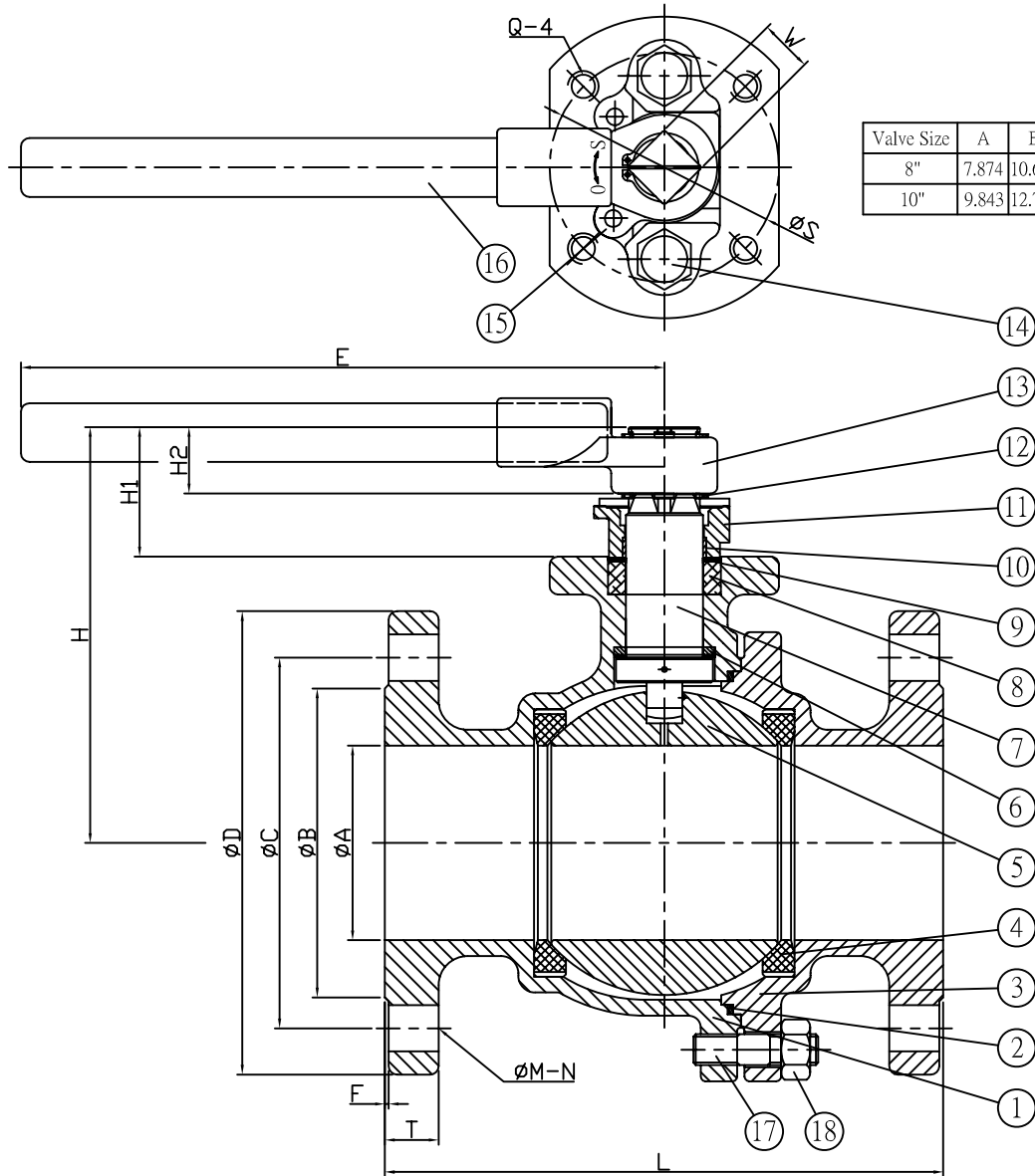
FLANGE DIMENSION: ASME B16.5
FACE TO FACE: ASME B16.10

DIMENSIONS

unit:mm

SIZE	PORT	L	E	H1	H2	H4	C	ØY	ØG	ØJ	ØI	T	F	M	ØN	ØK	Z	weight	
DN125	5"	125.0	381.0	600.0	233.0	45.0	163.0	23.0	36.0	279.4	235.0	186.0	35.0	1.6	8	Ø22.3	125	M12*1.75P	60.13KG
DN150	6"	150.0	403.0	800.0	259.0	45.0	182.5	23.0	36.0	317.5	269.8	216.0	36.6	1.6	12	Ø22.3	125	M12*1.75P	

REV	DATE	DESCRIPTION	CODE	REVISOR	REMARKS	MATERIAL	APPROVE	CHECK	DRAWN BY	A
						5"~6"			Lawrence	
						Class300	SCALE	FREE	UNIT	mm
						FIRE-SAFE	PART NO	AF-50F	DATE	2010/04/02
							OTHER	DWG NO	AF-50F	Q'TY
									TITLE	2-PC Firesafe Flanged Ball Valve
							AF^{low} Anson Anson Flow Corp.			



DIMENSIONS

Unit : Inch

Valve Size	A	B	C	D	E	F	H	H1	H2	L	W	S	T	Q	φM-N
8"	7.874	10.620	13.000	15.000	32.126	0.060	12.815	2.913	1.713	19.764	1.417	5.512	1.620	5/8"-11	φ1.000-12
10"	9.843	12.750	15.250	17.500	40.000	0.060	15.394	4.567	2.736	22.362	1.811	6.496	1.880	3/4"-10	φ1.120-16

MATERIALS

NO.	PART NAME	MATERIAL
1	BODY	ASTM A351 Gr. CF8M
2	BODY SEAL	SS 316+GRAPHITE
3	END CAP	ASTM A351 Gr. CF8M
4	SEAT	RTFE.(+15% G/F)
5	BALL	ASTM A351 Gr. CF8M
6	THRUST WASHER	PTFE.+GRAPHITE
7	STEM	SS 316
8	STEM PACKING	GRAPHITE
9	GLAND WASHER	PTFE.
10	GLAND BEARING	PTFE.
11	GLAND	SS 304
12	SNAP RING	SS 304
13	HANDLE ADAPTER	SS 304
14	BOLT	SS 304
15	STOP PLATE	SS 304
16	HANDLE	CARBON STEEL
17	STUD	ASTM A193 Gr. B8
18	NUT	ASTM A194 Gr. 8

REV	DATE	DESCRIPTION	CODE	REVISER	REMARKS	MATERIAL	APPROVE	CHECK	UNIT	SCALE	DRAWN BY	DATE	Q'TY	TITLE
						8"~10"			mm	FREE	Peggy	2005.09.22		2-PC FLANGED END BALL VALVE
						ANSI 300								
						FIRESAFE								
						API 607								
REV	DATE	DESCRIPTION	CODE	REVISER	REMARKS									



Anson Flow Corp.