

MATERIALS LIST

NO.	PART NAME	MATERIAL	
1	BODY	EN1503-1 1.4408	EN1503-1 1.0619
2	BALL	CF8M	CF8M
3	STEM	SS316	SS316
4	END CAP	EN1503-1 1.4408	EN1503-1 1.0619
5	BODY SEAL	GRAPHITE / GRAPHITE+50% SS316	
6	SEAT	PTFE / RPTFE / PEEK	
7	THRUST WASHER	GRAPHITE	
7-1	THRUST WASHER	RPTFE	
8	STEM PACKING	GRAPHITE	
9	THRUST WASHER	RPTFE	
10	GLAND	SS304	
11	HANDLE	SS304	
12	HANDLE COVER	PLASTIC	
13	STEM NUT	SS304	
14	HANDLE WASHER	SS304	
15	HANDLE NUT	SS304	
16	LOCKING PAD	SS304	
17	BELLEVILLE WASHER	SS304	
18	STOP WASHER	SS304	
19	STEM O-RING	VITON	
20	STOP	SS304	
21	STUD	ASTM A193 Gr.B8	
22	NUT	ASTM A194 Gr.8	

DIMENSIONS

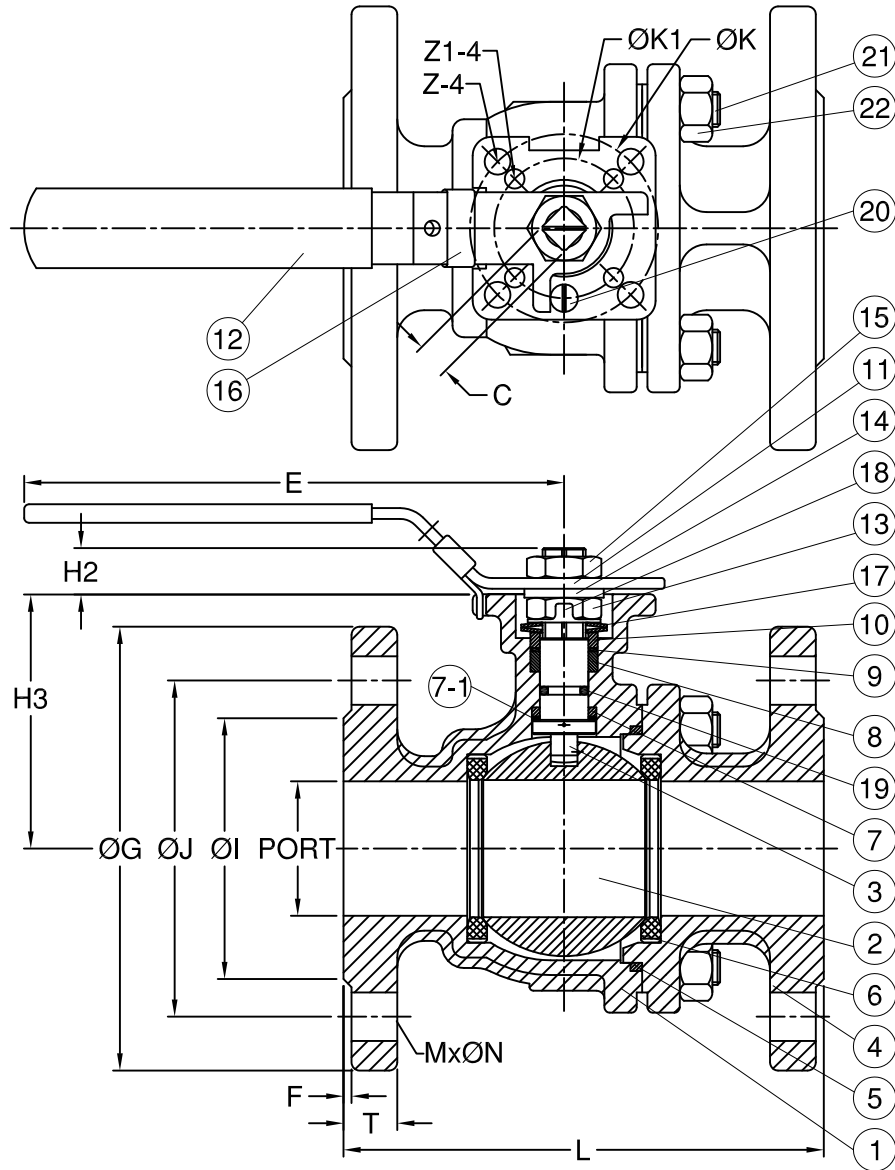
unit:mm

SIZE	PORT	L	E	H2	H3	C	ØG	ØJ	ØI	T	F	M	ØN	ØK	ØK1	Z-4	Z1-4	
DN15	1/2"	15.0	115.0	112	8.5	48	9.0	95.0	65.0	45.0	16.0	2.0	4	14.0	50.0	36.0	7.0	6.0
DN20	3/4"	20.0	120.0	112	8.5	62	9.0	105.0	75.0	58.0	18.0	2.0	4	14.0	50.0	36.0	7.0	6.0
DN25	1"	25.0	125.0	136	11.4	64	9.0	115.0	85.0	68.0	18.0	2.0	4	14.0	50.0	36.0	7.0	6.0
DN32	1-1/4"	32.0	130.0	185	11.4	71	9.0	140.0	100.0	78.0	18.0	2.0	4	18.0	50.0	36.0	7.0	6.0
DN40	1-1/2"	38.0	140.0	198	14.0	76	14.0	150.0	110.0	88.0	18.0	2.0	4	18.0	70.0	50.0	9.0	7.0
DN50	2"	50.0	150.0	198	13.7	84.5	14.0	165.0	125.0	102.0	20.0	2.0	4	18.0	70.0	50.0	9.0	7.0
DN65	2-1/2"	64.0	170.0	265	18.0	106.8	17.0	185.0	145.0	122.0	18.0	2.0	4	18.0	102.0	70.0	11.0	9.0
DN80	3"	76.0	180.0	265	18.0	116.0	17.0	200.0	160.0	138.0	20.0	2.0	8	18.0	102.0	70.0	11.0	9.0
DN100	4"	100.0	190.0	325	18.0	154.5	17.0	220.0	180.0	158.0	20.0	2.0	8	18.0	102.0	70.0	11.0	9.0

FLANGE DIMENSION: EN 1092-1 TYPE 21 RF SF
FACE TO FACE: EN558-1 F4 (DIN3202 F4)

REV	DATE	DESCRIPTION	CODE	REVISOR	REMARKS	MATERIAL	APPROVE	CHECK	SCALE	UNIT	DATE	Q'TY	TITLE
						DN15~DN100			free	mm	2009.06.19	1	2-PC Firesafe Flanged Ball Valve
						PN16			AF-53F				
									AF-53F-001				

Anson Flow Corp.



MATERIALS LIST

NO.	PART NAME	MATERIAL	
1	BODY	EN1503-1 1.4408	EN1503-1 1.0619
2	BALL	CF8M	CF8M
3	STEM	SS316	SS316
4	END CAP	EN1503-1 1.4408	EN1503-1 1.0619
5	BODY SEAL	GRAPHITE / GRAPHITE+50% SS316	
6	SEAT	PTFE / RPTFE / PEEK	
7	THRUST WASHER	GRAPHITE	
7-1	THRUST WASHER	RPTFE	
8	STEM PACKING	GRAPHITE	
9	THRUST WASHER	RPTFE	
10	GLAND	SS304	
11	HANDLE	SS304	
12	HANDLE COVER	PLASTIC	
13	STEM NUT	SS304	
14	HANDLE WASHER	SS304	
15	HANDLE NUT	SS304	
16	LOCKING PAD	SS304	
17	BELLEVILLE WASHER	SS304	
18	STOP WASHER	SS304	
19	STEM O-RING	VITON	
20	STOP	SS304	
21	STUD	ASTM A193 Gr.B8	
22	NUT	ASTM A194 Gr.8	

DIMENSIONS

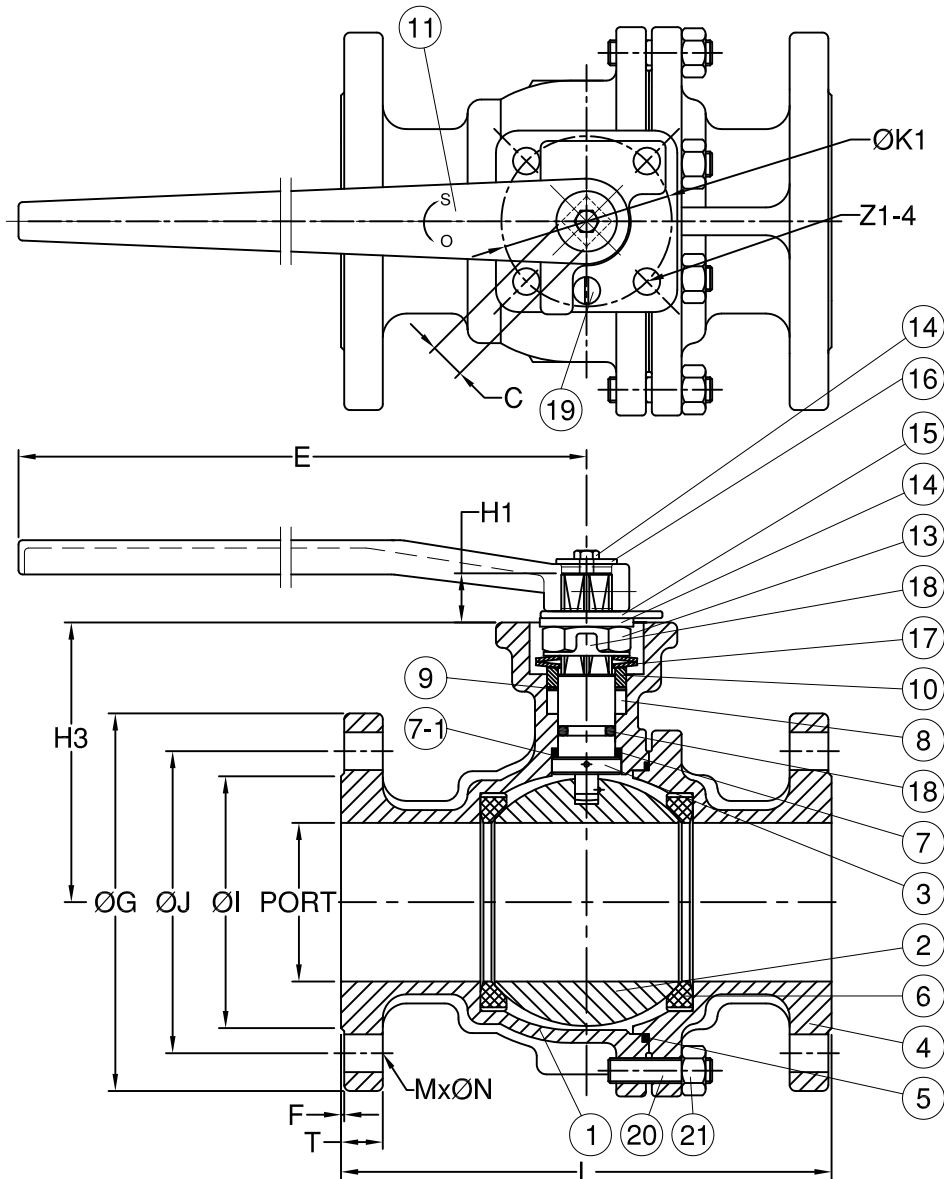
unit:mm

SIZE	PORT	L	E	H2	H3	C	ØG	ØJ	ØI	T	F	M	ØN	ØK	ØK1	Z-4	Z1-4	
DN15	1/2"	15.0	115.0	112	8.5	48	9.0	95.0	65.0	45.0	16.0	2.0	4	14.0	50.0	36.0	7.0	6.0
DN20	3/4"	20.0	120.0	112	8.5	62	9.0	105.0	75.0	58.0	18.0	2.0	4	14.0	50.0	36.0	7.0	6.0
DN25	1"	25.0	125.0	136	11.4	64	9.0	115.0	85.0	68.0	18.0	2.0	4	14.0	50.0	36.0	7.0	6.0
DN32	1-1/4"	32.0	130.0	185	11.4	71	9.0	140.0	100.0	78.0	18.0	2.0	4	18.0	50.0	36.0	7.0	6.0
DN40	1-1/2"	38.0	140.0	198	14.0	76	14.0	150.0	110.0	88.0	18.0	2.0	4	18.0	70.0	50.0	9.0	7.0
DN50	2"	50.0	150.0	198	13.7	84.5	14.0	165.0	125.0	102.0	20.0	2.0	4	18.0	70.0	50.0	9.0	7.0
DN65	2-1/2"	64.0	170.0	265	18.0	106.8	17.0	185.0	145.0	122.0	22.0	2.0	8	18.0	102.0	70.0	11.0	9.0
DN80	3"	76.0	180.0	265	18.0	116.0	17.0	200.0	160.0	138.0	24.0	2.0	8	18.0	102.0	70.0	11.0	9.0
DN100	4"	100.0	190.0	325	18.0	154.5	17.0	235.0	190.0	162.0	24.0	2.0	8	22.0	102.0	70.0	11.0	9.0

FLANGE DIMENSION: EN 1092-1 TYPE 21 RF SF
FACE TO FACE: EN558-1 F4 (DIN3202 F4)

REV	DATE	DESCRIPTION	CODE	REVISOR	REMARKS

MATERIAL	APPROVE	CHECK	REV	DRAWN BY
				Lawrence
	SCALE	free	UNIT	mm
	PART NO	AF-53F	Q'TY	1
	OTHER		TITLE	2-PC Firesafe Flanged Ball Valve
	DWG NO	AF-53F-001		



MATERIALS LIST

NO.	PART NAME	MATERIAL	
1	BODY	EN1503-1 1.4408	EN1503-1 1.0619
2	BALL	CF8M	CF8M
3	STEM	SS316	SS316
4	END CAP	EN1503-1 1.4408	EN1503-1 1.0619
5	BODY SEAL	GRAPHITE / GRAPHITE+50% SS316	
6	SEAT	PTFE / RPTFE / PEEK	
7	THRUST WASHER	GRAPHITE	
7-1	THRUST WASHER	RPTFE	
8	STEM PACKING	GRAPHITE	
9	THRUST WASHER	RPTFE	
10	GLAND	SS304	
11	HANDLE	FCD45	
13	STEM NUT	SS304	
14	HANDLE WASHER	SS304	
15	TRIANGLE STOPPER	SS304	
16	BOLT	SS304	
18	STEM O-RING	VITON	
19	STOP	SS304	
20	STUD	ASTM A193 Gr.B8	
21	NUT	ASTM A194 Gr.8	

DIMENSIONS

unit:mm

SIZE	PORT	L	E	H1	H3	C	ØG	ØJ	ØI	T	F	M	ØN	ØK1	Z1-4	
DN125	5"	125.0	325.0	750.0	30.0	194.0	27.0	270.0	220.0	188.0	26.0	2.0	8	26.0	125.0	14.0
DN150	6"	150.0	350.0	750.0	30.0	213.0	27.0	300.0	250.0	218.0	28.0	2.0	8	26.0	125.0	14.0

FLANGE DIMENSION: EN 1092-1 TYPE 21 RF SF

FACE TO FACE: EN558-1 F5 (DIN3202 F5)

REV	DATE	DESCRIPTION	CODE	REVISER	REMARKS	MATERIAL	APPROVE	CHECK	SCALE	UNIT	mm	DATE	DRAWN BY	Q'TY	TITLE
						DN125~DN150 PN40			free			2009.06.19	Lawrence	1	2-PC Firesafe Flanged Ball Valve
									PART NO	AF-53F					
									DWG NO	AF-53F-002					
									Anson Flow Corp.						