

MATERIALS LIST

NO.	PART NAME	MATERIAL	
1	BODY	EN1503-1 1.4408	EN1503-1 1.0619
2	BALL	CF8M	CF8M
3	STEM	SS316	SS316
4	END CAP	EN1503-1 1.4408	EN1503-1 1.0619
5	BODY SEAL	PTFE	PTFE
6	SEAT	PTFE / RPTFE	PTFE / RPTFE
7	THRUST WASHER	PTFE / RPTFE	PTFE / RPTFE
8	STEM PACKING	PTFE / RPTFE	PTFE / RPTFE
9	THRUST WASHER	PTFE.+25%G.F.	PTFE.+25%G.F.
10	GLAND	SS304	SS304
11	HANDLE	SS304	SS304
12	HANDLE COVER	PLASTIC	PLASTIC
13	STEM NUT	SS304	SS304
14	HANDLE WASHER	SS304	SS304
15	HANDLE NUT	SS304	SS304
16	LOCKING PAD	SS304	SS304
17	BELLEVILLE WASHER	SS304	SS304
18	STOP WASHER	SS304	SS304
19	STEM O-RING	VITON	VITON
20	STOP	SS304	SS304
21	STUD	ASTM A193 Gr.B8	ASTM A193 Gr.B8
22	NUT	ASTM A194 Gr.8	ASTM A194 Gr.8

DIMENSIONS

unit:mm

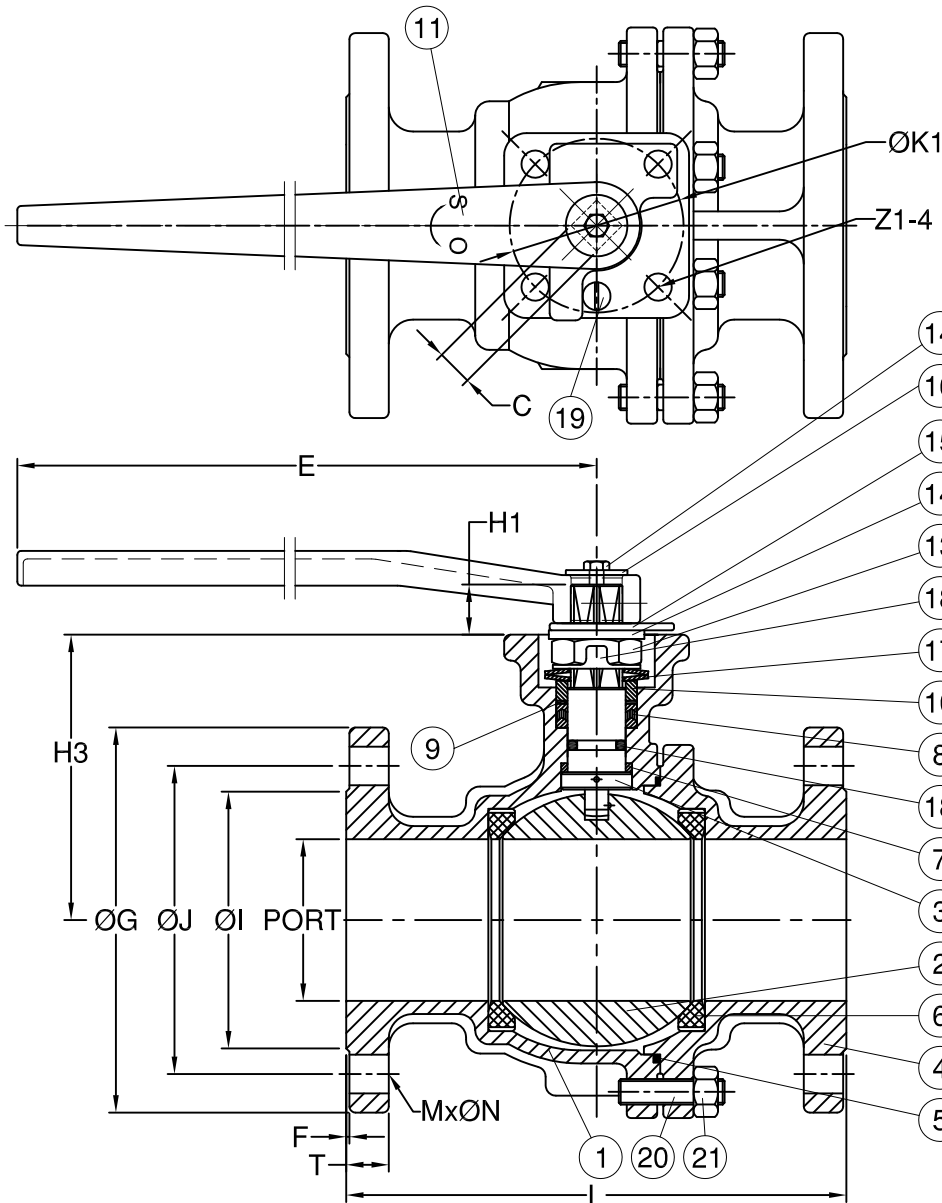
SIZE	PORT	L	E	H2	H3	C	ØG	ØJ	ØI	T	F	M	ØN	ØK	ØK1	Z-4	Z1-4	
DN15	1/2"	15.0	115.0	112	8.5	48	9.0	95.0	65.0	45.0	16.0	2.0	4	14.0	50.0	36.0	7.0	6.0
DN20	3/4"	20.0	120.0	112	8.5	53.5	9.0	105.0	75.0	58.0	18.0	2.0	4	14.0	50.0	36.0	7.0	6.0
DN25	1"	25.0	125.0	136	9.5	64	9.0	115.0	85.0	68.0	18.0	2.0	4	14.0	50.0	36.0	7.0	6.0
DN32	1-1/4"	32.0	130.0	185	9.5	71	9.0	140.0	100.0	78.0	18.0	2.0	4	18.0	50.0	36.0	7.0	6.0
DN40	1-1/2"	38.0	140.0	198	14.0	76	14.0	150.0	110.0	88.0	18.0	2.0	4	18.0	70.0	50.0	9.0	7.0
DN50	2"	50.0	150.0	198	13.7	84.5	14.0	165.0	125.0	102.0	20.0	2.0	4	18.0	70.0	50.0	9.0	7.0
DN65	2-1/2"	64.0	170.0	265	18.0	106.8	17.0	185.0	145.0	122.0	22.0	2.0	8	18.0	102.0	70.0	12.0	10.0
DN80	3"	76.0	180.0	265	18.0	116.0	17.0	200.0	160.0	138.0	24.0	2.0	8	18.0	102.0	70.0	12.0	10.0
DN100	4"	100.0	190.0	325	18.0	154.5	17.0	235.0	190.0	162.0	24.0	2.0	8	22.0	102.0	70.0	12.0	10.0

FLANGE DIMENSION: EN 1092-1 TYPE 21 RF SF
FACE TO FACE: EN558-1 F4 (DIN3202 F4)

REV	DATE	DESCRIPTION	CODE	REVISOR	REMARKS	MATERIAL	APPROVE	CHECK	SCALE	UNIT	DATE	Q'TY	TITLE
						DN15~DN100 PN40			free	mm	2011.06.21	1	2-PC Flanged Ball Valve
									AF-53				
									AF-53-001				



Anson Flow Corp.



MATERIALS LIST

NO.	PART NAME	MATERIAL	
1	BODY	EN1503-1 1.4408	EN1503-1 1.0619
2	BALL	CF8M	CF8M
3	STEM	SS316	SS316
4	END CAP	EN1503-1 1.4408	EN1503-1 1.0619
5	BODY SEAL	PTFE	PTFE
6	SEAT	PTFE / RPTFE	PTFE / RPTFE
7	THRUST WASHER	PTFE / RPTFE	PTFE / RPTFE
8	STEM PACKING	PTFE / RPTFE	PTFE / RPTFE
9	THRUST WASHER	PTFE.+25%G.F.	PTFE.+25%G.F.
10	GLAND	SS304	SS304
11	HANDLE	FCD45	FCD45
13	STEM NUT	SS304	SS304
14	HANDLE WASHER	SS304	SS304
15	TRIANGLE STOPPER	SS304	SS304
16	BOLT	SS304	SS304
18	STEM O-RING	VITON	VITON
19	STOP	SS304	SS304
20	STUD	ASTM A193 Gr.B8	ASTM A193 Gr.B8
21	NUT	ASTM A194 Gr.8	ASTM A194 Gr.8

DIMENSIONS

unit:mm

SIZE	PORT	L	E	H1	H3	C	ØG	ØJ	ØI	T	F	M	ØN	ØK1	Z1-4	
DN125	5"	125.0	325.0	750.0	30.0	194.0	27.0	270.0	220.0	188.0	26.0	2.0	8	26.0	125.0	14.0
DN150	6"	150.0	350.0	750.0	30.0	213.0	27.0	300.0	250.0	218.0	28.0	2.0	8	26.0	125.0	14.0

FLANGE DIMENSION: EN 1092-1 TYPE 21 RF SF
FACE TO FACE: EN558-1 F5 (DIN3202 F5)

REV	DATE	DESCRIPTION	CODE	REVISOR	REMARKS	MATERIAL	APPROVE	CHECK	SCALE	UNIT	DRAWN BY	DATE	Q'TY
						DN125~DN150			free	mm	Lawrence	2009.07.07	1
						PN40			AF-53				
									AF-53-002	TITLE			2-PC Flanged Ball Valve



Anson Flow Corp.