

MATERIAL LIST

NO.	PART NAME	MATERIAL	
1	BODY	1.4408 / EN 1503-1	1.0619 / EN 1503-1
4	BALL	CF8M / EN1503-2	
5	STEM	SS316	
9	INSERT CAP	1.4408 / EN 1503-1	1.0619 / EN 1503-1
11	BODY SEAL	PTFE.	
12	SEAT	PTFE.	
13	THRUST WASHER	PTFE.	
14	STEM PACKING	PTFE.	
15	GLAND	SS304	
19	HANDEL	SS304	
21	HANDEL COVER	PLASTIC	
22	STEM NUT	SS304	
23	HANDEL WASHER	SS304	
24	HANDEL NUT	SS304	
29	BELLEVILLE WASHER	SS301	
33	STOP PIN	SS304	

DIMENSION

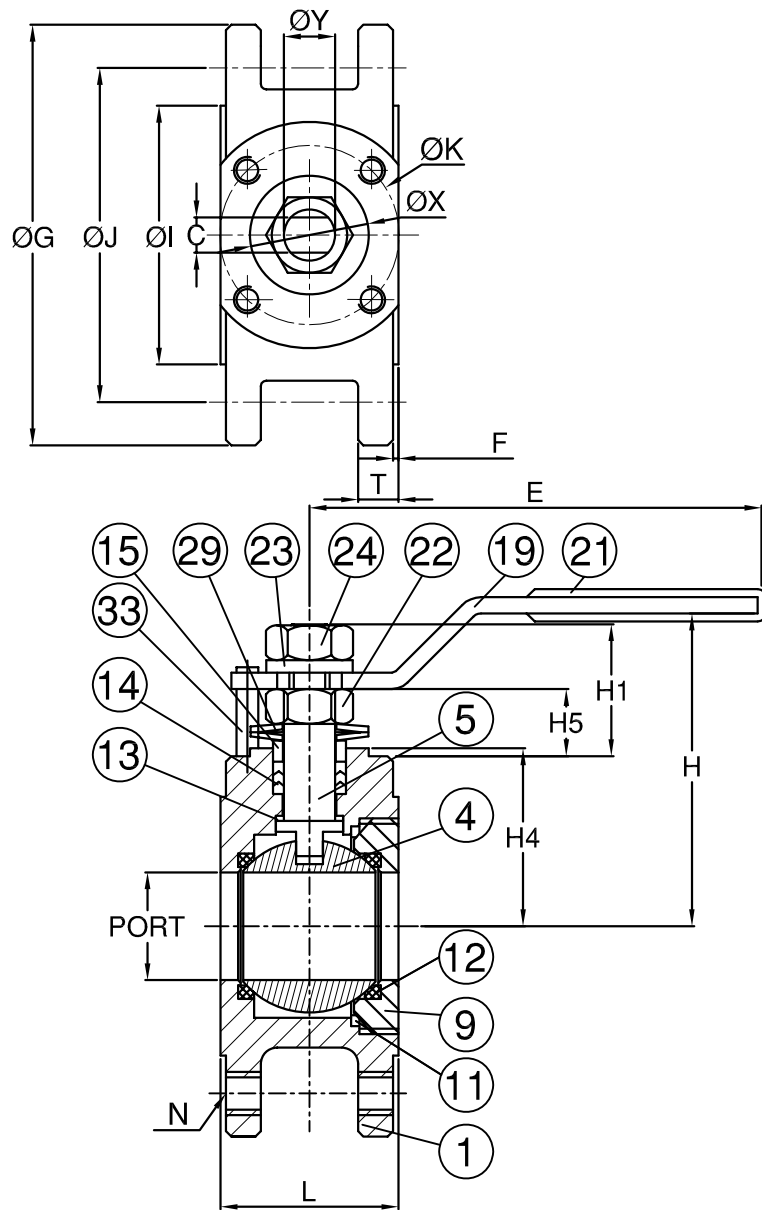
unit:mm

SIZE	PORT	L	E	H	H1	H4	H5	C	ØX	ØY	ØG	ØJ	ØI	T	F	ØK	N	
DN15	1/2"	16	35	116	57	19.2	32	8.1	6.5	25	10	90	65	45	7.0	2	36	M12
DN20	3/4"	20	38	116	64	21.2	38	10.6	6.5	25	10	100	75	58	7.0	2	36	M12
DN25	1"	25	44	165	68	22.2	42	10.6	6.5	25	10	110	85	65	7.5	2	36	M12

REV	DATE	DESCRIPTION	CODE	REVISER	REMARKS	MATERIAL	APPROVE	CHECK	SCALE	UNIT	mm	Q'TY	DATE	REV	A		
						PN16 Wafer Ball Valve 1/2" - 1"			FREE	UNIT	mm	1	2003.12.12	Kevin			
									PART NO	AF-56	⊕	1					
									DWG NO	AF-56-001	TITLE	Wafer Flanged Ball Valve					
		Wafer Flanged Ball Valve DN15~DN25 PN16															

MATERIAL LIST

NO.	PART NAME	MATERIAL	
1	BODY	1.4408 / EN 1503-1	1.0619 / EN 1503-1
4	BALL	CF8M / EN1503-2	
5	STEM	SS316	
9	INSERT CAP	1.4408 / EN 1503-1	1.0619 / EN 1503-1
11	BODY SEAL	PTFE.	
12	SEAT	PTFE + 15% G.F.	
13	THRUST WASHER	PTFE.	
14	STEM PACKING	PTFE.	
15	GLAND	SS304	
19	HANDEL	SS304	
21	HANDEL COVER	PLASTIC	
22	STEM NUT	SS304	
23	HANDEL WASHER	SS304	
24	HANDEL NUT	SS304	
29	BELLEVILLE WASHER	SS301	
33	STOP PIN	SS304	



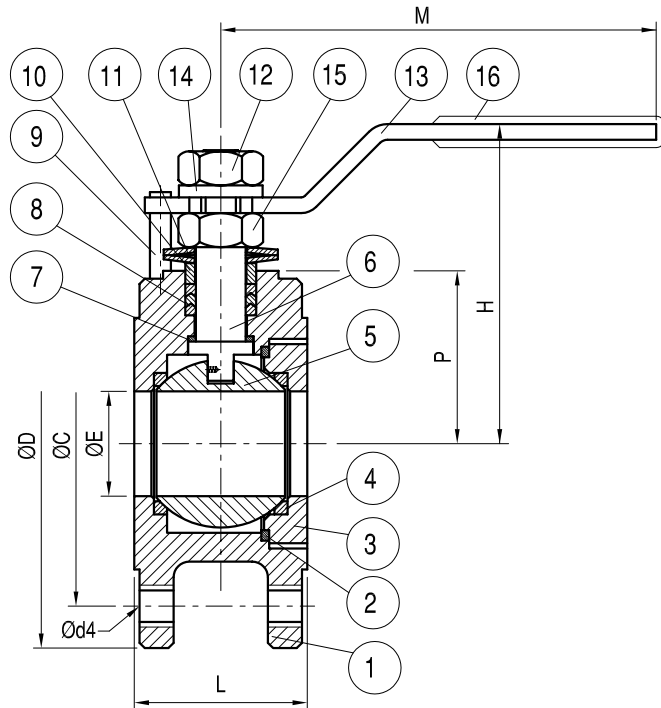
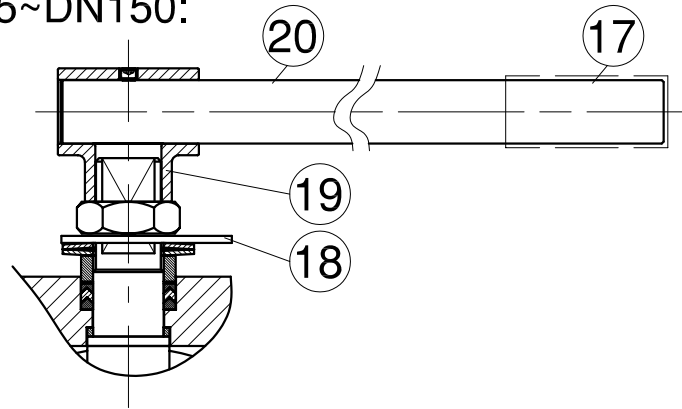
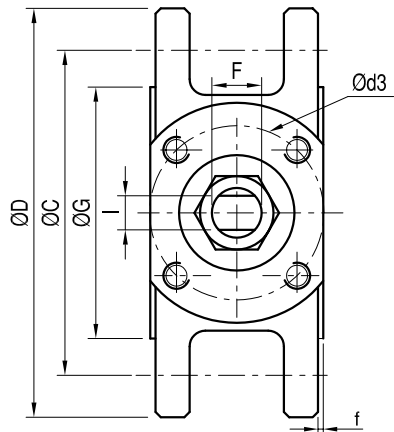
DIMENSION

unit:mm

SIZE	PORT	L	E	H	H1	H4	H5	C	$\varnothing X$	$\varnothing Y$	$\varnothing G$	$\varnothing J$	$\varnothing I$	T	F	$\varnothing K$	N	
DN32	1-1/4"	32	54	165	85	30.5	50	15.0	8.5	32	16	130	100	78	17.0	2	42	M16
DN40	1-1/2"	38	62	193	89	30.5	54	15.0	8.5	35	16	150	110	88	19.0	2	50	M16
DN50	2"	50	80	193	98	29.5	62	14.0	8.5	35	16	150	125	102	19.5	2	50	M16
DN65	2-1/2"	64	101	235	129	39.5	82	17.4	12	53	20	178	145	122	19.5	2	70	M16
DN80	3"	76	118	235	138	40.0	91	17.9	12	53	20	190	160	138	20.5	3	70	M16
DN100	4"	96	150	329	164	48.5	107	23.0	16	55	24	220	180	158	24.5	3	102	M16
DN125	5"	118	164	405	188	57.0	117	17.0	17	55	27	250	210	188	24.5	3	102	M16
DN150	6"	138	182	460	198	57.0	130	17.0	17	60	27	280	240	198	25.0	3	125	M20

REV	DATE	DESCRIPTION	CODE	REVISER	REMARKS	MATERIAL	APPROVE	CHECK	SCALE	UNIT	PART NO	DWG NO	TITLE	Q'TY	DATE	REV	A
						PN16							Wafer Flanged Ball Valve	1	2003.12.12		
						Wafer			FREE	mm	AF-56						
						Ball Valve											
						1-1/4" - 6"											
		Wafer Flanged Ball Valve DN32~DN150 PN16											Wafer Flanged Ball Valve				

DN125~DN150:



□ MATERIAL OF CONSTRUCTION

ITEM	PARTS	MATERIAL	QTY
1	BODY	CF8M,CF8(1.4408)	1
2	GASKET	PTFE	1
3	RING NUT	CF8M,CF8(1.4408)	1
4	SEAT	PTFE	2
5	BALL	AISI 316,304(1.4408)	1
6	STEM	AISI 316	1
7	STEM SEAL	PTFE	1
8	STEM PACKING	PTFE	1
9	STOP	AISI 304	1
10	RING	AISI 304	1
11	BEVEL WASHER	AISI 301	2
12	NUT	AISI 304	1
13	HANDLE	AISI 304	1
14	SPRING WASHER	AISI 304	1
15	NUT	AISI 304	1
16	PLASTIC COVER	PLASTIC	1
17	HANDLE SLEEVE	PLATIC	1
18	STOP BOLT	SS304	1
19	HANDLE ADAPTER	CF8	1
20	HANDLE	STEEL	1

□ DIMENSION(M.M.)

SIZE	DN	ISO-5211	C	D	Ød3	Ød4	ØE	F	I	ØG	H	L	L1	M	P	f
1-1/4"	32	F04	88.9	117.3	42	5/8"	32	11.2	8.0	64.0	87	54	48	165	50	1.6
1-1/2"	40	F05	98.6	127.0	50	5/8"	38	11.2	8.0	73.2	90	62	54	193	54	1.6
2"	50	F05	120.7	152.4	50	5/8"	50	11.2	8.0	91.9	99	80	72	193	62	1.6
2-1/2"	65	F07	139.7	177.8	70	5/8"	64	16.0	9.5	104.6	141	101	93	235	82	1.6
3"	80	F07	152.4	190.5	70	5/8"	76	28.0	9.5	127.0	150	118	110	235	91	1.6
4"	100	F10	190.5	228.6	102	5/8"	96	28.0	17	157.2	172	150	144	266	107	1.6
6"	150	F12	240.0	285.0	125	3/4"	138	28.0	17	215.9	220	182	177	600	130	1.6

REV	DATE	DESCRIPTION	CODE	REVISOR	REMARKS	MATERIAL	APPROVE	CHECK	SCALE	UNIT	TITLE	REV	A
						ANSI 150			FREE	mm	Wafer Flanged Ball Valve	DATE	2003.12.12
						Wafer			AF-56		Q'TY		1
						Ball Valve							
						1/2" - 1"			DWG NO	AF-56-V1F-002	TITLE		
		Wafer Flanged Ball Valve 1-1/4"~6" ANSI 150											