

MATERIALS LIST

NO.	PART NAME	MATERIAL	
1	BODY	ASTM A351 CF8M	ASTM A216 WCB
2	BALL	CF8M	CF8M
3	STEM	SS316	SS316
4	END CAP	ASTM A351 CF8M	ASTM A216 WCB
5	BODY SEAL	PTFE.	PTFE.
6	SEAT	RTFE.	RTFE.
7	THRUST WASHER	RTFE.	RTFE.
8	STEM PACKING	RTFE.	RTFE.
9	THRUST WASHER	PTFE.+25%G.F.	PTFE.+25%G.F.
10	GLAND	SS304	SS304
11	HANDLE	SS304	SS304
12	HANDLE COVER	PLASTIC	PLASTIC
13	STEM NUT	SS304	SS304
14	HANDLE WASHER	SS304	SS304
15	HANDLE NUT	SS304	SS304
16	LOCKING PAD	SS304	SS304
17	BELLEVILLE WASHER	SUS301	SUS301
18	STOP WASHER	SS304	SS304
19	STEM O-RING	VITON	VITON
20	STOP	SS304	SS304
21	STUD	ASTM A193 Gr.B8	ASTM A193 Gr.B8
22	NUT	ASTM A194 Gr.8	ASTM A194 Gr.8

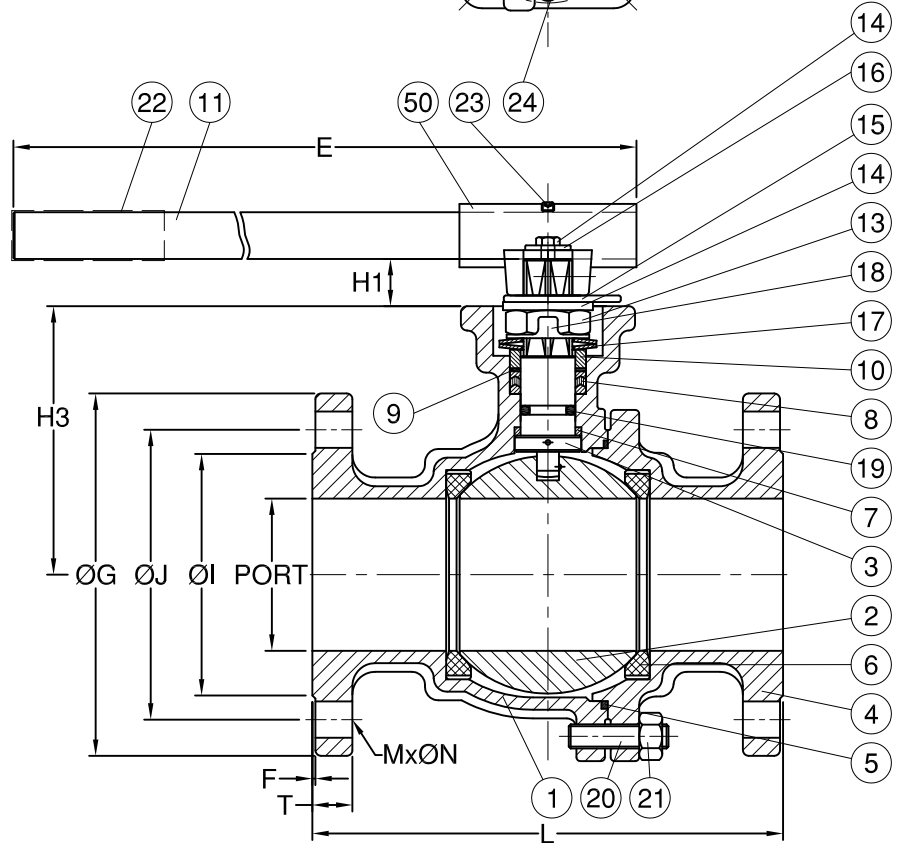
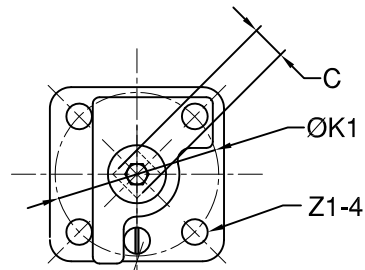
DIMENSIONS

unit:mm

SIZE	PORT	L	E	H2	H3	C	ØG	ØJ	ØI	T	F	M	ØN	ØK	ØK1	ØZ-4	ØZ1-4			
DN15	1/2"	15.0	108.0	112	8.5	48	9.0	89.0	60.5	35.0	11.2	1.6	4	16.0	50	F05	36	F03	7.0	6.0
DN20	3/4"	20.0	117.0	112	8.5	53.5	9.0	98.6	70.0	43.0	12.7	1.6	4	16.0	50	F05	36	F03	7.0	6.0
DN25	1"	25.0	127.0	136	9.5	64	9.0	108.0	79.2	51.0	14.3	1.6	4	16.0	50	F05	36	F03	7.0	6.0
DN32	1-1/4"	32.0	140.0	185	9.5	71	9.0	117.5	88.9	63.5	15.9	1.6	4	16.0	50	F05	36	F03	7.0	6.0
DN40	1-1/2"	38.0	165.0	198	14.0	76	14.0	127.0	98.6	73.2	17.5	1.6	4	16.0	70	F07	50	F05	9.0	7.0
DN50	2"	50.0	178.0	198	13.7	84.5	14.0	152.5	120.7	92.0	19.1	1.6	4	19.0	70	F07	50	F05	9.0	7.0
DN65	2-1/2"	64.0	190.0	265	18.0	106.8	17.0	177.8	139.7	104.7	23.3	1.6	4	19.0	102	F10	70	F07	12.0	10.0
DN80	3"	76.0	203.0	265	18.0	116.0	17.0	190.5	152.4	127.0	23.9	1.6	4	19.0	102	F10	70	F07	12.0	10.0
DN100	4"	100.0	229.0	325	18.0	154.5	17.0	228.6	190.5	157.2	23.9	1.6	8	19.0	102	F10	70	F07	12.0	10.0

FLANGE DIMENSION: ASME B16.5
FACE TO FACE: ASME B16.10

						MATERIAL		APPROVE	CHECK	REV	
						1/2"~4" Class 150		SCALE	FREE UNIT	mm	DRAWN BY Lawrence
						OTHER		PART NO	AF-51-001	Q'TY	DATE 2011.06.21
								DWG NO	AF-51-001	TITLE	2-PC Flanged Ball Valve
REV	DATE	DESCRIPTION	CODE	REVISER	REMARKS						



MATERIALS LIST

NO.	PART NAME	MATERIAL	
1	BODY	ASTM A351 CF8M	ASTM A216 WCB
2	BALL	ASTM A351 CF8M	CF8M
3	STEM	SS316	SS316
4	END CAP	ASTM A351 CF8M	ASTM A216 WCB
5	BODY SEAL	PTFE.	PTFE.
6	SEAT	RTFE.	RTFE.
7	THRUST WASHER	RTFE.	RTFE.
8	STEM PACKING	RTFE.	RTFE.
9	THRUST WASHER	PTFE.+25%G.F.	PTFE.+25%G.F.
10	GLAND	SS304	SS304
11	HANDLE	LRON	LRON
13	STEM NUT	SS304	SS304
14	HANDLE WASHER	SS304	SS304
15	TRIANGLE STOPPER	SS304	SS304
16	BOLT	SS304	SS304
17	BELLEVILLE WASHER	SUS301	SUS301
18	STOP WASHER	SS304	SS304
19	STEM O-RING	VITON	VITON
20	STUD	ASTM A193 Gr.B8	ASTM A193 Gr.B8
21	NUT	ASTM A194 Gr.8	ASTM A194 Gr.8
22	HANDLE COVER	PLASTIC	PLASTIC
23	SET BOLT	SS304	SS304
24	STOP	SS304	SS304
50	HANDLE ADAPTER	ASTM A351 CF8	ASTM A351 CF8

DIMENSIONS

unit:mm

SIZE	PORT	L	E	H1	H3	C	ØG	ØJ	ØI	T	F	M	ØN	ØK1	Z1-4
DN125	5"	125.0	356.0	600.0	30.0	194.0	27.0	254.0	216.0	186.0	24.0	1.6	8	22.3	125 F12 14.0
DN150	6"	150.0	394.0	800.0	30.0	213.0	27.0	279.4	241.3	216.0	25.4	1.6	8	22.3	125 F12 14.0

FLANGE DIMENSION: ASME B16.5

FACE TO FACE: ASME B16.10

REV	DATE	DESCRIPTION	CODE	REVISOR	REMARKS	MATERIAL	APPROVE	CHECK	SCALE	UNIT	mm	DATE	REV	Lawrence
						5"~6" Class 150			FREE	UNIT	mm	2015.11.12		
									PART NO	AF-51-002	QTY			
									DWG NO	AF-51-002	TITLE			2-PC Flanged Ball Valve
									AF^{low}_{Inson} Anson Flow Corp.					