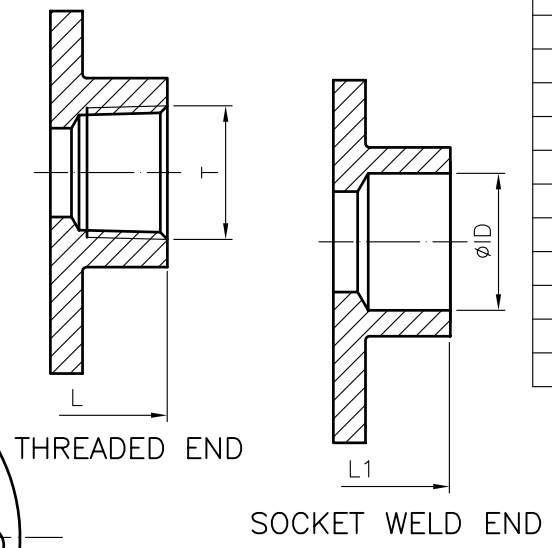
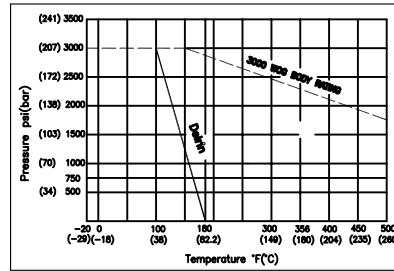
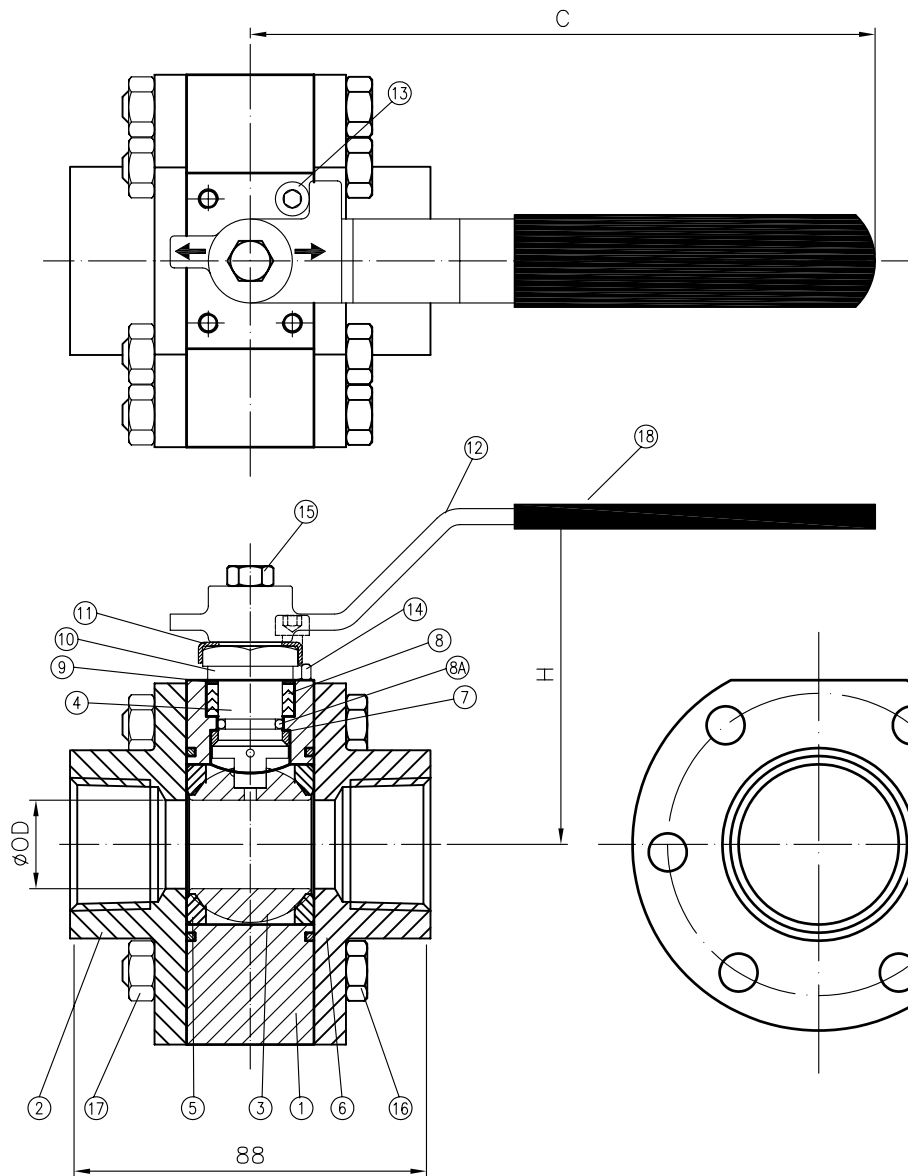


ITEM	DISCRIPTION	MATERIAL	Q'TY
1	Body	CF8M/LCB	1
2	End Cap	CF3M/CF8M/LCB	2
3	Ball	CF8M	1
4	Anti Static Stem	SS316	1
5	Ball Seat	DELRIN	2
6	Body Seal	PTFE.TEFLON	2
7	Thrust Washer	DELRIN	1
8A	O-Ring	VITON	1
8	Stem Packing	PTFE.TEFLON	1
9	Thrust Washer	50%SS.50%PTFE	1
10	Stem Nut	SS304	1
11	Lock Saddle	SS304	1
12	Handle	SS304	1
13	Stop Bolt	SS304	1
14	Stop Nut	SS304	1
15	Handle Bolt	SS304	1
16	Body Bolt	SS304	6
17	Bolt Nut	SS304	6
18	Handle Sleeve	VINYL	1

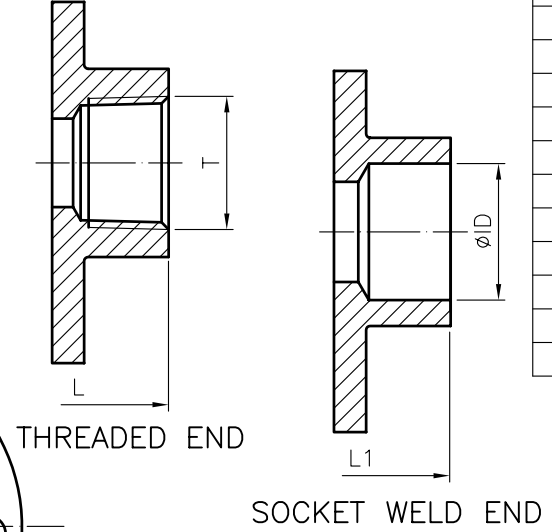


SIZE	ØOD	ØID	T	L	L1	C	H
1/2"	12.7	22.0	NPT	75	75	126	72
3/4"	17.5	27.4		80	80	126	75
1"	22.1	34.1	PT	90	90	156	85
1-1/4"	29.0	42.9	PF 2999	110	110	156	89
1-1/2"	34.7	49.0		120	120	181	115
2"	47.5	61.5		140	140	181	118

						MATERIAL	APPROVE	CHECK	DRAWN BY lawrence			
						1/2"~2" Class 1500	SCALE	FREE	UNIT	mm	DATE	2008.08.22
							OTHER	DWG NO	AF-37-3E0000-1A	Q'TY		
									TITLE	3-PC THREAD END BALL VALVE		
REV	DATE	DESCRIPTION	CODE	REVISER	REMARKS	AFlow Anson Anson Flow Corp.						

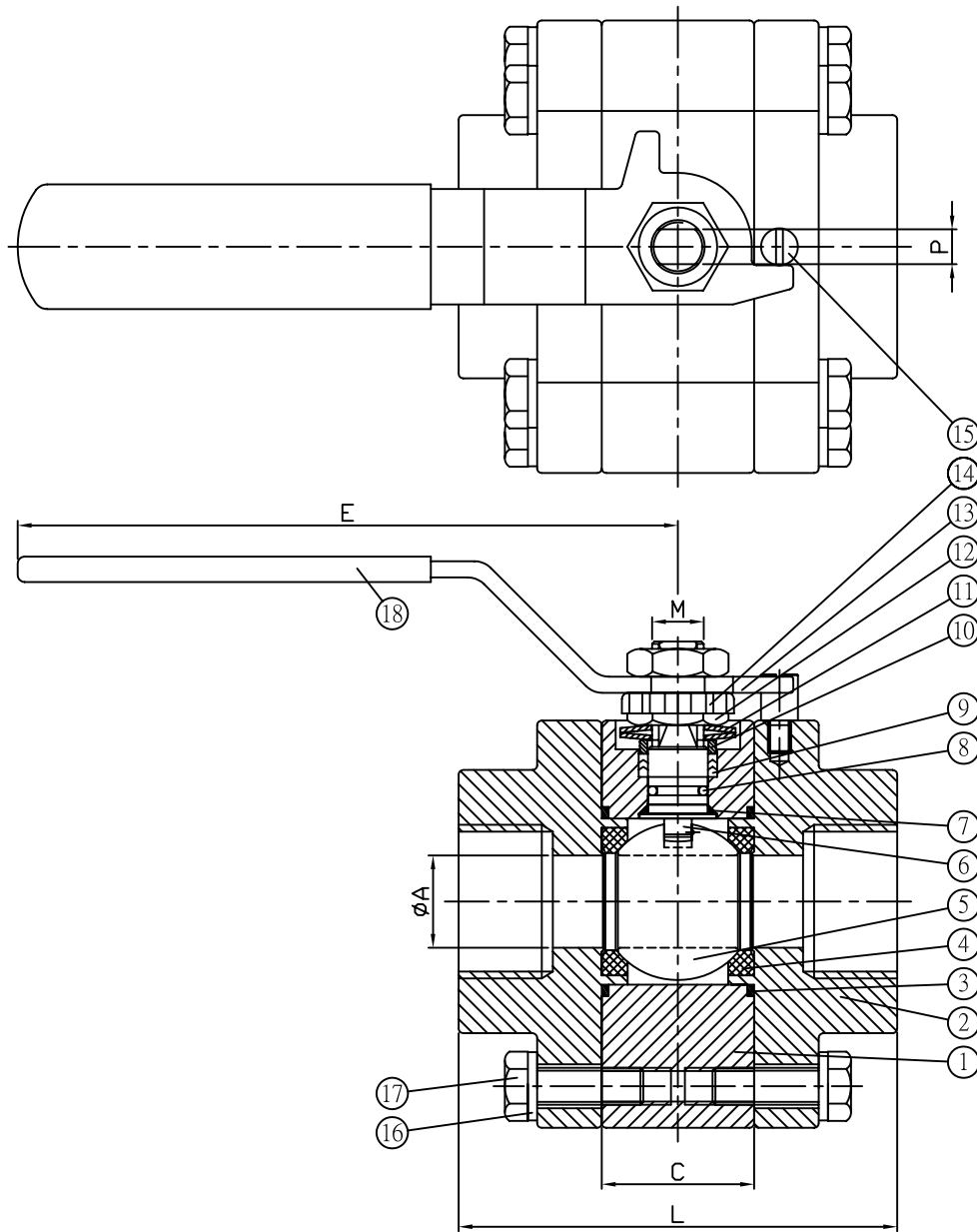


ITEM	DISCRIPTION	MATERIAL	Q'TY
1	Body	CF8M/LCB	1
2	End Cap	CF3M/CF8M/LCB	2
3	Ball	CF8M	1
4	Anti Static Stem	SS316	1
5	Ball Seat	DELRIN	2
6	Body Seal	PTFE.TEFLON	2
7	Thrust Washer	DELRIN	1
8A	O-Ring	VITON	1
8	Stem Packing	PTFE.TEFLON	1
9	Thrust Washer	50%SS.50%PTFE	1
10	Stem Nut	SS304	1
11	Lock Saddle	SS304	1
12	Handle	SS304	1
13	Stop Bolt	SS304	1
14	Stop Nut	SS304	1
15	Handle Bolt	SS304	1
16	Body Bolt	SS304	6
17	Bolt Nut	SS304	6
18	Handle Sleeve	VINYL	1



SIZE	ØOD	ØID	T	L	L1	C	H
3/4' RP	12.7	27.4	NPT	79	79	126	72
1' RP	17.5	34.1	PT	88	88	126	75
1-1/4' RP	22.1	42.9		103	103	156	85
1-1/2' RP	29.0	49.0	PF	111	111	156	89
2' RP	34.7	61.5	2999	128	128	181	115

REV	DATE	DESCRIPTION	CODE	REVISER	REMARKS	MATERIAL	APPROVE	CHECK	SCALE	UNIT	mm	Q'TY	TITLE	DRAWN BY	DATE
						3/4"RP~2"RP			FREE				3-PC THREAD END BALL VALVE	lawrence	2008.08.22
						Class 1500									



DIMENSIONS Unit : MM

Valve Size	A	C	E	L	M	P
1/2"	15.0	33.0	142.0	85.0	M12	9.00
3/4"	20.0	33.0	142.0	95.0	M12	9.00
1"	25.0	41.0	162.0	108.0	M12	9.00
1-1/4"	32.0	50.0	162.0	128.0	M18	14.00
1-1/2"	38.0	56.0	200.0	140.0	M18	14.00
2"	50.0	71.0	200.0	163.0	M18	14.00

MATERIAL LIST

NO.	PART NAME	MATERIAL
1	BODY	Stainless St. ASTM A182 F316 Carbon St. ASTM A105
2	END CAP	Stainless St. ASTM A182 F316 Carbon St. ASTM A105
3	BODY SEAL	Delrin
4	SEAT	Delrin / Peek
5	BALL	SS316
6	STEM	SS316
7	THRUST WASHER	Delrin
8	O-RING	VITON
9	STEM PACKING	PTFE-25% Carbon Filled
10	GLAND	SS304
11	BELLEVILLE WASHER	SS304
12	STEM NUT	SS304
13	HANDLE	SS304
14	LOCK WASHER	SS304
15	STOP PIN	SS304
16	BOLT WASHER	SS304
17	BOLT	SS304
18	HANDLE COVER	PLASTIC

REV	DATE	DESCRIPTION	CODE	REVISER	REMARKS	MATERIAL	APPROVE	CHECK	SCALE	UNIT	mm	Q'TY	REV	F
						2500LB			FREE	UNIT	mm		DRAWN BY	Peggy
						6000PSI			PART NO	F-37			DATE	2005/11/09
		3-PC High Pressure Ball Valve							DWG NO	F-37-HP401-N01S	TITLE		Q'TY	
		Full Bore, Threaded End, 6000PSI							OTHER					
									AF ^{low} Inson Anson Flow Corp.					