

MODEL NO: AF-29

2-PC DIRECT MOUNT BALL VALVE

Each integrated ISO-5211 Mounting Pad Square Stem can be with direct Mount without Bracket/Adaptor.

Stem is with Blow-out Proof design as well as Anti-Static device.

Viton O-Ring on Stem gives extra support and assurance of tightness.

Stem seal is with 45 angle against stem, which increases tightening effect.

Except actuating service , handle lever is available for Manual Operation

Working Pressure :3000psi (200bar)

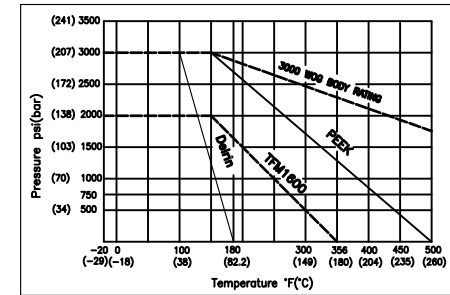
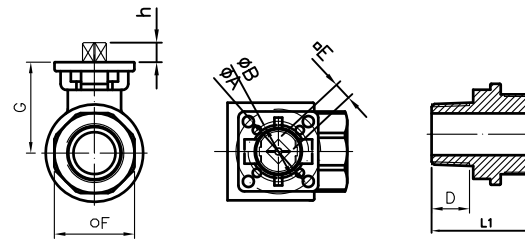
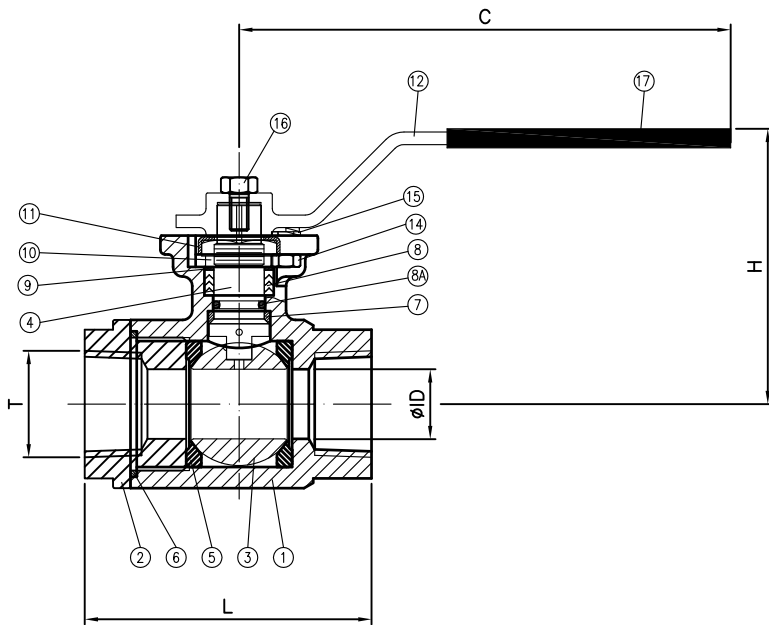
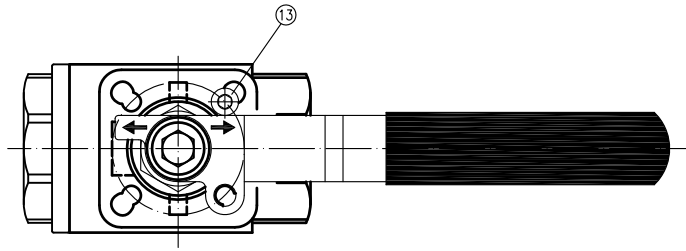
SIZE : 1/4 ~ 2RP

TEST PRESSURE

SEAT(AIR):80PSI

SHELL(HYDROSTATIC):4500PSI(300bar)

ITEM	Part Name	Material	Q'ty
1	Body	CF8M	1
2	End Cap	CF8M	1
3	Ball	CF8M	1
4	Anti Static Stem	SS316	1
5	Ball Seat	DELFIN	2
6	Body Seal	PTFE,TEFLON	1
7	Thrust Washer	PTFE,TEFLON	1
8	Stem Packing	PTFE,TEFLON	1
8A	O-ring	VITON	1
9	Thrust Washer	50%SS,50%PTFE	1
10	Stem Nut	SS304	1
11	Lock Saddle	SS304	1
12	Handle	SS304	1
13	Stop Bolt	SS304	1
14	Stop Nut	SS304	1
15	Stop Washer	SS304	1
16	Handle Bolt	SS304	1
17	Handle Sleeve	VINYL	1



SIZE	ϕID	A	B	C	E	F	G	h	H	L	L1	D	T
1/4"	9.6	F03	F04	126	9	25.9	41.0	8	72	75	88.9	11.4	NPT
3/8"	9.6	F03	F04	126	9	25.9	41.0	8	72	75	88.9	11.4	
1/2"	12.7	F03	F04	126	9	32.6	41.0	8	72	75	92	15	PT
3/4"	17.5	F03	F04	126	9	38.4	43.8	8	75	81	99	16	
1"	22.1	F04	F05	156	11	47.2	53.5	10	87	91	113	20	PF
1-1/4"	29.0	F04	F05	156	11	58.9	59.0	10	93	110	127.1	21	
1-1/2"	34.7	F05	F07	181	14	66.2	75.2	13	114	121	141	22	2999
2RP"	34.7	F05	F07	181	14	82.0	75.2	13	114	145	155	23	

REV	DATE	DESCRIPTION	CODE	REVISOR	REMARKS	MATERIAL	APPROVE	CHECK	DRAWN BY			
									Lawrence			
							SCALE	FREE	UNIT	mm	DATE	2006.09.18
							PART NO	AF-29			Q'TY	
							OTHER	DWG NO	AF-29	TITLE	2-PC Direct Mount Ball Valve	
									Anson Flow Corp.			